



COMPANY PROFILE



شركة سماء المميزة لمواد البناء
SKY SPECIALIZED
FOR BUILDING MATERIALS

“Quality In Every Solution”

Products & Services

TABLE OF CONTENTS

Contents

About Us	3
ISO Certifications.....	5
Passive Fire Protection Partners	9
CRAFCO	16
CRAFCO SUPERSHOT 60.....	17
CRAFCO SUPERSHOT 125.....	17
CRAFCO SUPERSHOT 250.....	17
Prismo Global.....	6
ACOCHEM (Advanced Construction Chemicals)	17
Hygt Chemical Group	27
Dewmark.....	38
FasTrac.....	43
Aerogreen Solutions LLC	47
RaynGuard Protective Materials	50
SSBM – CCC1000S	59
Banca della Calce	62
UNISTRUT	67
Roadtechs.....	69
Tensar,	72
Rexmar	75
380-750	81
STARKEM® SRL,	84
TCE	88
Co-mender Inc.	92
DOLENCO	95
Highway Resource Solutions (HRS) Ltd	97



About Us

Sky Specialized Building Materials Co.

Sky Specialized Building Materials Co. (SSBM) , located in Jeddah, Saudi Arabia is a leading supplier of high-quality construction chemicals, epoxy coatings, polyurea linings and coatings, passive fire stop systems, intumescent paints and fire retardant, fire barriers and fireproof cords, asphaltic bridge joints, mechanical joints, hot and cold applied sealants, melters/applicators, injection pumps, packers for resin and grouts, road marking machine, Unistrut channels, cable trays, ladders and fittings. With years of experience in the construction industry, we have earned a strong reputation for delivering reliable products and exceptional services. As a trusted partner to contractors, builders, engineers, and project owners, we are committed to providing comprehensive solutions that contribute to the success and durability of construction projects.

We supply the best quality products and services with the latest technology for the construction industry at affordable prices

The range of products and services offered by Sky Specialized Building Materials Co. includes:

- Epoxy Repairs and Adhesives
- Grouts, Injection and Soil Stabilizers
- Industrial Flooring & Coating Systems
- Polyurea Lining and Coating System
- Waterproofing Sealers & Concrete Protection Systems
- Injection Pump & Flooring Accessories
- Hot & Cold Applied Sealants, Melters /Cutters for Asphalt & Concrete
- Asphaltic Plug Joints / Expansion Joints
- Road & Airport Markings
- Airport Runways & Taxiways Maintenance Products.
- Passive Fire Protection System
- Fire retardant, intumescent paints, Fire Barriers, Fireproof Cord.
- Road Marking Machines & Equipment
- Unistrut Channels, Cable Trays, Ladders & Fixings
- Tensar Geogrid System.
- Aerogreen specialty cleaners, runway rubber removal, façade cleaner.
- HYGTT SS21 Soil Stabilizer.
- Fastrac Resurfacer for Airports.
- TEC for Deconstruction & Environmental Engineering



Our Vision:

Our vision is to be the leading provider of superior quality construction materials, delivering exceptional value and service to our customers. We aim to contribute to the growth and success of the construction industry by supplying top-notch products that meet the highest standards of quality and durability.



Our Mission:

At **Sky Specialized For Building Materials Co. (SSBM)** our mission is to be the preferred choice for construction professionals, offering a wide range of top-quality products and services. We strive to deliver innovative solutions, technical expertise, and outstanding customer support while upholding the highest standards of professionalism, integrity, and efficiency. Our goal is to foster long-term relationships with our clients based on trust, reliability, and mutual growth.

Supporting Your Construction Project:

- Consultation and Technical Support
- Expert advice on product selection and specification
- Technical assistance and training
- Specification and compliance support

Efficient Supply Chain Management:

- Timely procurement and delivery of materials
- Inventory management and just-in-time supply Solutions
- Consolidated shipments for multi-product orders

After-Sales Support:

- Warranty assistance and claims processing
- Product troubleshooting and technical assistance
- Proactive customer service to address concerns and inquiries

We established longer and closer working relationships with our Customers & Suppliers not only provide immediate and reliable services but to continually exceed expectations and goals. We create commercial flows, import and export products, arranging and managing international projects with our partners. Supported by our network, we are able to integrate all these functions. with our fruitful experience. Our numerous competencies allow us to respond to the needs of industries seeking entry into new markets.



Certificate of Registration

This is to certify that

SKY SPECIALIZED FOR BUILDING MATERIALS

AT

**PRINCE SULTAN ROAD, AL MUHAMMADIYYAH
DISTRICT, JEDDAH, KSA**

has been assessed and certified by Vatsin Certification as meeting the requirements of

ISO 45001 : 2018

(Occupational Health & Safety Management System)

For the following activities

SUPPLY OF EPOXY REPAIRS AND ADHESIVES, INJECTION PUMPS, FLOORING ACCESSORIES, GROUTS, AND SOIL STABILIZERS, INDUSTRIAL FLOORING, COATING SYSTEMS & POLYUREA LINING SOLUTIONS, WATERPROOFING SEALERS & CONCRETE PROTECTION SYSTEMS, HOT & COLD SEALANTS, MELTERS/CUTTERS, AND ASPHALTIC PLUG/EXPANSION JOINTS RUNWAY & TAXIWAY MARKING AND MAINTENANCE PRODUCTS, PASSIVE FIRE PROTECTION SYSTEM, FIRE RETARDANT, INTUMESCENT PAINTS, FIRE BARRIERS, FIREPROOF CORD. ROAD MARKING MACHINES & EQUIPMENT, SPECIALTY CLEANERS, RUNWAY RUBBER REMOVAL, FAÇADE CLEANER.

IAF CODE - 29

Certificate No : VC23037838

To verify this certificate please visit at www.vatsincertification.com

Date of Initial Registration : 30-09-2025

Revision No. : 00

Re-Certification Due : 29-09-2028

1st Surveillance : 29-09-2026

2nd Surveillance : 29-09-2027

Certificate Expiry : 29-09-2028



MSCB-291



Signature
**Authorised
Signatory**

VATSIN CERTIFICATION PRIVATE LIMITED

Accredited by IAS (International Accreditation Services, Inc.)
(3060 Saturn Street, Suite 100, Brea, California 92821 United States of America)

* Validity of the Certificate is subject to successful completion of surveillance audit on or before of due date. (in case Surveillance audit is not allowed to be conducted, this certificate shall be suspended/cancelled)

* Certificate is the Property of VATSIN CERTIFICATION and shall be returned immediately when demanded.

* E-mail : info@vatsincertification.com Website : www.vatsincertification.com





Certificate of Registration

This is to certify that

SKY SPECIALIZED FOR BUILDING MATERIALS

AT

**PRINCE SULTAN ROAD, AL MUHAMMADIYAH
DISTRICT, JEDDAH, KSA**

has been assessed and certified by Vatsin Certification as meeting the requirements of

ISO 14001 : 2015

(Environmental Management Systems)

For the following activities

SUPPLY OF EPOXY REPAIRS AND ADHESIVES, INJECTION PUMPS, FLOORING ACCESSORIES, GROUTS, AND SOIL STABILIZERS, INDUSTRIAL FLOORING, COATING SYSTEMS & POLYUREA LINING SOLUTIONS, WATERPROOFING SEALERS & CONCRETE PROTECTION SYSTEMS, HOT & COLD SEALANTS, MELTERS/CUTTERS, AND ASPHALTIC PLUG/EXPANSION JOINTS RUNWAY & TAXIWAY MARKING AND MAINTENANCE PRODUCTS, PASSIVE FIRE PROTECTION SYSTEM, FIRE RETARDANT, INTUMESCENT PAINTS, FIRE BARRIERS, FIREPROOF CORD. ROAD MARKING MACHINES & EQUIPMENT, SPECIALTY CLEANERS, RUNWAY RUBBER REMOVAL, FAÇADE CLEANER.

IAF CODE - 29

Certificate No : VC23024761

To verify this certificate please visit at www.vatsincertification.com

Date of Initial Registration : 30-09-2025

Revision No. : 00

Re-Certification Due : 29-09-2028

1st Surveillance : 29-09-2026

2nd Surveillance : 29-09-2027

Certificate Expiry : 29-09-2028



MSCB-291



Signature
**Authorised
Signatory**

VATSIN CERTIFICATION PRIVATE LIMITED

Accredited by IAS (International Accreditation Services, Inc.)
(3060 Saturn Street, Suite 100, Brea, California 92821 United States of America)

* Validity of the Certificate is subject to successful completion of surveillance audit on or before of due date. (in case Surveillance audit is not allowed to be conducted, this certificate shall be suspended/cancelled)

* Certificate is the Property of VATSIN CERTIFICATION and shall be returned immediately when demanded.

* E-mail : info@vatsincertification.com Website : www.vatsincertification.com





Certificate of Registration

This is to certify that

SKY SPECIALIZED FOR BUILDING MATERIALS

AT

**PRINCE SULTAN ROAD, AL MUHAMMADIYYAH
DISTRICT, JEDDAH, KSA**

has been assessed and certified by Vatsin Certification as meeting the requirements of

ISO 9001 : 2015

(Quality Management System)

For the following activities

SUPPLY OF EPOXY REPAIRS AND ADHESIVES, INJECTION PUMPS, FLOORING ACCESSORIES, GROUTS, AND SOIL STABILIZERS, INDUSTRIAL FLOORING, COATING SYSTEMS & POLYUREA LINING SOLUTIONS, WATERPROOFING SEALERS & CONCRETE PROTECTION SYSTEMS, HOT & COLD SEALANTS, MELTERS/CUTTERS, AND ASPHALTIC PLUG/EXPANSION JOINTS RUNWAY & TAXIWAY MARKING AND MAINTENANCE PRODUCTS, PASSIVE FIRE PROTECTION SYSTEM, FIRE RETARDANT, INTUMESCENT PAINTS, FIRE BARRIERS, FIREPROOF CORD. ROAD MARKING MACHINES & EQUIPMENT, SPECIALTY CLEANERS, RUNWAY RUBBER REMOVAL, FAÇADE CLEANER.

IAF CODE - 29

Certificate No : VC23018441

To verify this certificate please visit at www.vatsincertification.com

Date of Initial Registration : 30-09-2025

Revision No. : 00

Re-Certification Due : 29-09-2028

1st Surveillance : 29-09-2026

2nd Surveillance : 29-09-2027

Certificate Expiry : 29-09-2028



MSCB-291



Signature
Authorized
Signatory

VATSIN CERTIFICATION PRIVATE LIMITED

Accredited by IAS (International Accreditation Services, Inc.)
(3060 Saturn Street, Suite 100, Brea, California 92821 United States of America)

* Validity of the Certificate is subject to successful completion of surveillance audit on or before of due date. (in case Surveillance audit is not allowed to be conducted, this certificate shall be suspended/cancelled)

* Certificate is the Property of VATSIN CERTIFICATION and shall be returned immediately when demanded.

* E-mail : info@vatsincertification.com Website : www.vatsincertification.com





WE REPRESENT & COOPERATE WITH THE
FOLLOWING INTERNATIONAL COMPANIES IN
SAUDI ARABIA & THE MIDDLE EAST

PASSIVE FIRE PROTECTION PARTNERS - CANADA	
CRAFCO INC. - USA	
Prismo global -UK	
ADVANCED CONSTRUCTION CHEMICALS (ACHOCHEM) - BELGIUM	
HYGT CHEMICAL GROUP	
DEWMARK EXPANSION JOINT SYSTEMS	
FASTRAC CONSTRUCTION PRODUCTS	
AEROGREEN - USA	
RaynGuard Protective Materials	
SSBM CONCRETE SEALER	 
LA BANCA DELLA CALCE SRL	
UNISTRUT - UK	
ROADTECHS GROUP - UK	
TENSAR INTERNATIONAL	
REXMAR ENGINEERING - UK	
380-750	
STARKEM SRL - ITALY	
TCE-ENVIRONMENTAL ENGG.	
CO-MENDER INC. - CANADA	
DOLENCO TUNNEL SYSTEM	
HIGHWAY RESOURCE SOLUTIONS (HRS) LTD. - UK	



Passive Fire Protection Partners was created to develop and manufacture firestop compounds using "state of the art" technology to overcome deficiencies found in other products in today's market.

The company develops and manufactures firestop compounds that help protect life and property. Passive Fire Protection Partners has been producing firestop materials since the inception of the industry. For over 25 years they have been designing and improving our products ..with a focus on safety and the end user.

The company's products are tested and rated by Warnock Hersey, a division of Intertek Testing Services, Factory Mutual Research Corp., Omega Point Laboratories and by Underwriters Laboratories (UL).

Passive Fire Protection Partners works closely with our customers and contractors to help them succeed. In addition to our Firestop brand, Passive Fire Protection Partners also offers private label manufacturing. If you are interested in having a firestop product line under your brand name, please contact us at firestop@firestop.com below.

The Passive Fire Protection Partners product line is "job site" friendly, and offers significant benefits and substantial purchase savings for our customers.

Key product features include:

- Non-toxic and non-hazardous, assuring no harmful side effects to the applicator and end user.
- Easy to install and clean, resulting in significant cost savings for contractors.
- Water soluble prior to curing and waterproof when cured.
- Superior for applying to damp surfaces.
- Suitable for application on mildly contaminated surfaces.
- High quality products available at extremely competitive prices.

The company's foundation is rooted in the belief that true fire safety can be achieved without compromising user health or ease of installation — thanks to non-toxic, user-friendly firestop products.

With Passive Fire Protection Partners products, a new standard of safety and performance has been created throughout the passive fire protection industry.



شركة سماء المتخصصة لمواد البناء
SKY SPECIALIZED
FOR BUILDING MATERIALS

INTEGRATED MANAGEMENT SYSTEM
ISO ISO ISO
ISO 9001:2015 ISO 14001:2015 ISO 45001:2018



FIRESTOP **Product and** **Listings Guide**

Passive Fire Protection Partners
Toll Free: 1.800.810.1788
www.firestop.com

Version 7.0



Passive Fire Protection (PFP) Partners is dedicated to providing firestopping products that are safe to use and easy to install. Our complete line of water-based firestop caulks and sprays means easier installation, easier clean up with no special handling or disposal requirements and lower exposure to volatile organic compounds (VOC's). When cured our firestopping products have been designed to remain flexible while forming a durable seal to help prevent the passage of smoke, fire and toxic fumes through fire-rated floor and wall assemblies.

4800DW



4800DW is our one-component, endothermic firestop caulking, which when fully cured produces a durable, flexible seal.

- Paintable (when cured with a latex based paint)
- Non-toxic-Safe to use
- Comprehensive listings-Some up to 4 hours
- Red color

4100NS



4100NS is our premium elastomeric latex-based firestop caulking. Its non-sag formulation and outstanding flexibility make it ideal for firestopping head-of-wall and control joints.

- Elastomeric – 33% compression and extension
- Paintable (when cured with a latex based paint)
- Non-toxic-Safe to use
- Gray color

3600EX



3600EX is our intumescent (expands when exposed to heat) acrylic based firestop caulking. **3600EX's** highly expansive formulation means that it will expand and seal around combustible service penetrations.

- Intumescent – Expands when exposed to high temperatures
- Paintable (when cured with a latex based paint)
- Non – toxic - Safe to use
- Red color

5100SP



5100SP is our spray brush applied elastomeric firestop sealant. **5100SP's** easy application and outstanding flexibility makes it ideal for firestopping construction joints.

- Sprayable – Fast and easy installation
- Elastomeric – 33% compression and extension
- Paintable (when cured with a latex based paint)
- Gray color

3500SI



3500SI is a latex – based, intumescent spray designed to stop the passage of fire, smoke and fumes through fire rated separation. **3500SI** spray forms a durable and flexible seal after curing.

- Sprayable – Fast and easy installation
- Elastomeric – 33% compression and extension
- Intumescent - Expands when exposed to high temperatures

4100SL



4100SL is our pourable, high performance firestop sealant. **4100SL's** one-component self-leveling formulation requires no special tooling and is ideal for firestopping floor penetrations.

- *Self-Leveling-no tooling*
- *Paintable (when cured with a latex based paint)*
- *Non-toxic-Safe to use*
- *Red color*

3300PS



3300PS is non-hardening, intumescent compound designed to seal through penetrations of electrical wires and cables in 1- and 2-hour fire-rated wall and floor assemblies. The 3300PS when exposed to heat will expand up to 3 times.

- *High Adhesion – Adheres to most common construction materials*
- *Intumescent – Expands when exposed to high temperatures*
- *Non - hardening – Reusable and retrofittable*
- *Red color*

Putty Pads



MP1 is a moldable fire rated intumescent putty pad. Use **MP1's** to restore the hourly rating of fire rated wall assemblies containing electrical outlet boxes. An additional benefit of using **MP1's** to sealing electrical outlet boxes is that it helps to restore the wall's acoustical performance.

- *Easy Installation – Apply by hand*
- *Intumescent – Expands when exposed to high temperatures*
- *Non – toxic - Safe to use*
- *Red color*

WS-1



WS1 is a flexible intumescent wrap strip used to firestop combustible and insulated pipe penetrations in fire-rated wall and floor assemblies.

- *Fast installation – No special tools required*
- *Intumescent – Expands when exposed to high temperatures*
- *Non – toxic - Safe to use*
- *Water Resistant – Non – Soluble*

EBI-60



The **EBI-60** is a precut highly intumescent electrical box insert for use in electrical switches or receptacle boxes. The **EBI-60** has been designed to be installed inside the box. The **EBI-60** when exposed to high temperatures or flames will expand up to 24x its original volume.

- *Easy Installation – Just apply to the box's back wall*
- *Precut – No waste*
- *Intumescent - Expands when exposed to high temperatures*
- *Non – toxic - Safe to use*

Pillows



The **Pillow** is a pliable brick shaped pillow, which makes it easy to firestop medium to large penetrations just stack and compress. When exposed to fire or high temperatures the highly intumescent **Pillow** will expand to seal around the penetrants(s) forming a solid barrier.

- *Easy Installation – Stack and compress*
- *Intumescent – Expands when exposed to high temperatures*
- *Non - hardening – Reusable and retrofittable*
- *Red color*

PPC Collar



The **PPC Collar** is a pre-manufactured, one piece, powder coated, heavy steel device designed to constrict combustible pipe penetrations in fire-rated wall and floor assemblies. The **PPC Collar** are used to firestop an assortment of combustible pipes including ABS, ccABS, CPVC, FRPP, PVC, ccPVC & PP in both closed (process or supply) and vented (drain, waste or vent) piping systems.

- *High Quality – Pre - Manufactured*
- *Intumescent – Expands when exposed to high temperatures*
- *Easy to Install*
- *Red color*

The **FCW-44** has been designed to stop the passage of fire, smoke and fumes through fire rated separations, while allowing easy access to install or remove cables. The FCW-44's two-piece design allows an easy retrofit solution to pre-existing cable installations.

- *Intumescent Core – Expands in volume to quickly close off voids and stop fire, smoke and heat*
- *Precut – No waste*
- *Intumescent - Expands when exposed to high temperatures*
- *Non – toxic - Safe to use*

FCW-44



The **Pillow** is a pliable brick shaped pillow, which makes it easy to firestop medium to large penetrations just stack and compress. When exposed to fire or high temperatures the highly intumescent **Pillow** will expand to seal around the penetrants(s) forming a solid barrier.

- *Easy Installation – Stack and compress*
- *Intumescent – Expands when exposed to high temperatures*
- *Non - hardening – Reusable and retrofittable*
- *Red color*

The **PPC Collar** is a pre-manufactured, one piece, powder coated, heavy steel device designed to constrict combustible pipe penetrations in fire-rated wall and floor assemblies. The **PPC Collar** are used to firestop an assortment of combustible pipes including ABS, ccABS, CPVC, FRPP, PVC, ccPVC & PP in both closed (process or supply) and vented (drain, waste or vent) piping systems.

- *High Quality – Pre - Manufactured*
- *Intumescent – Expands when exposed to high temperatures*
- *Easy to Install*
- *Red color*

The **FCW-44** has been designed to stop the passage of fire, smoke and fumes through fire rated separations, while allowing easy access to install or remove cables. The FCW-44's two-piece design allows an easy retrofit solution to pre-existing cable installations.



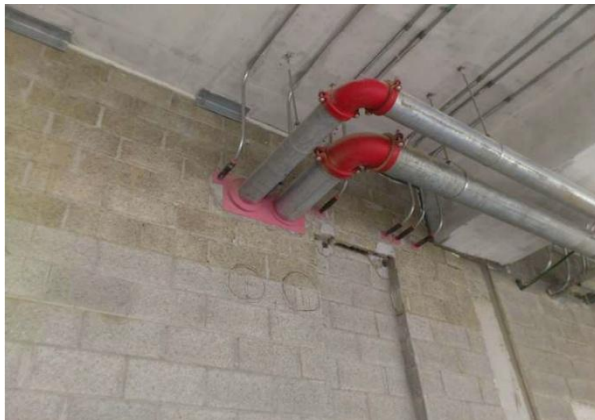
شركة سماء المتخصصة لمواد البناء
SKY SPECIALIZED
FOR BUILDING MATERIALS



member of:



APPLICATION PICTURES



Areas That Permit Fire Spread

- Through Penetrations
- Membrane Penetrations
- Blank Openings
- Construction Joints
- Perimeter Fire Barrier Systems
- Duct Enclosure Systems





Since 1976, **Crafco** has been recognized worldwide as the premier provider of pavement preservation products. Such leadership derives from Crafco's profound knowledge of pavement systems, along with their understanding of the current problems associated with maintaining these systems.

Crafco works closely with the State and Federal Highway Administrations, Airport Authorities and Town & Country Road Departments to recommend and advise them on the best product for their pavement conditions.

Crafco is the only company in the pavement preservation industry manufacturing quality application equipment as well as the consumable goods for all pavement maintenance needs.

Product Lines include:

E-Z Pour Melters

E-Z Series II Melter / Applicator

Supershot Melter (60 / 125 / 250)

Router Model 30 Pavement Cutter

PolyPatch & Techcrete Repair Systems for Concrete and Asphalt

Crafco Emulsion Storage Tanks

Crafco Super Sealcoater

Crafco Hot Applied Sealants

Crafco Silicone Sealant

Crafco Poreshield Concrete Protection

Crafco Asphalt Protection System (Reclamite)

EQUIPMENTS

CRAFCO SUPERSHOT 60

is a 60-gallon capacity unit, which features automatic digital controls. It is propane fired, with a heated hose and wand. This machine is designed for used on projects under 2,000 pounds of sealant per day. The Super Shot 60 is also available as a skid mount.



CRAFCO SUPERSHOT 125

The mid-sized 125-gallon capacity offers the best versatility. Ideal for mid to large sized projects, this unit is diesel powered available with an optional compressor or a labour-saving Auto Loader.



CRAFCO SUPERSHOT 250

The oversized 250-gallon is designed for large projects. This machine will out-perform any melter in its class and is available with many standard options.





MODEL 30 PAVEMENT ROUTER
PN 21300



MODEL 30 SELF PROPELLED PAVEMENT ROUTER
PN 21340



MODEL 30 DUST CONTROL ROUTER
PN 21350



Our mastic melter is designed specifically to melt mastic sealants. Our **Patcher II**™ mastic melter keeps mastic temperatures within specifications at all times, and provides superior material agitation and aggregate suspension for a consistent material blend.





CRAFCO EQUIPMENT



APPLICATION PICTURES

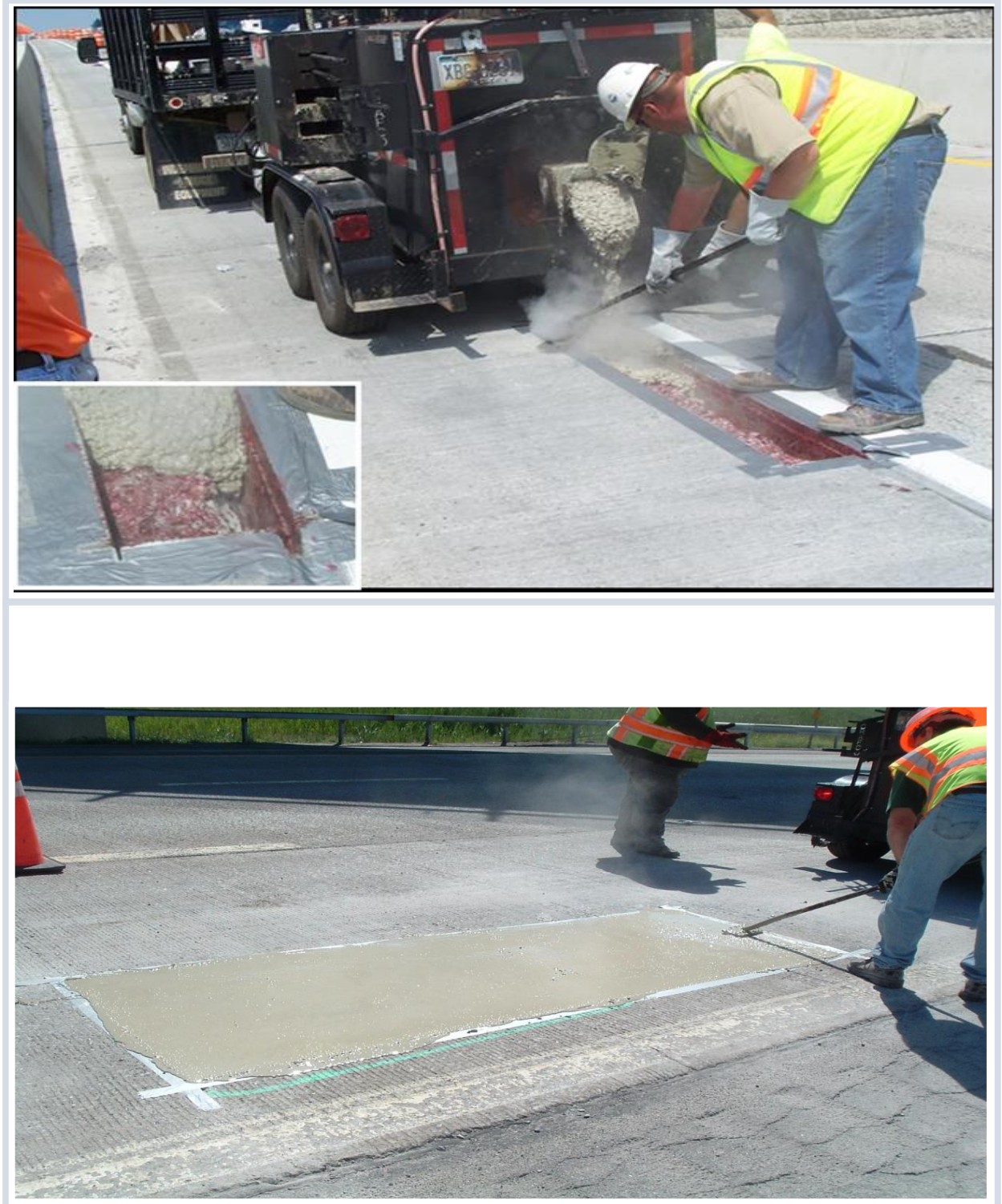




CRAFCO SILICONE SEALANT



FLEXIBLE PCCP SPALL REPAIR MATERIAL CRAFCO TECHCRETE



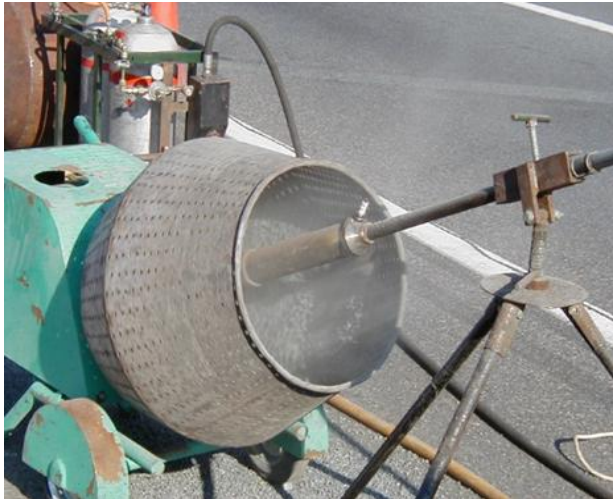


CRAFCO MATRIX 502-ASPHALTIC JOINT SYSTEM





CRAFCO HOT APPLIED CRACK & JOINT SEALANT



Prismo Global

“The mark of enduring Quality”



Prismo Global is a United Kingdom based company and is considered to be a leader and highly reputable company in the industry. The core solutions and business which Prismo Global performs includes road safety, surface treatment and infrastructure marking solutions. For nearly a century, Prismo Global has set its own identity and is committed to innovation, technical expertise and high-performance sustainable products for road networks across the globe.

Prismo Global has set itself apart from completion and became the number one company in thermoplastic and cold plastic road markings, anti-skid surfacing, reflective road studs, crack sealing, and highway maintenance materials and more.

They are always committed to manufacture their own products and ensuring they meet the diverse needs of their customers. Records have proven that the ground marking solutions for Prismo Global have been proven in the real world over decades and across continents.

Prismo Global solutions include:

- Hot applied Thermoplastics
- Performed Thermoplastics
- High Friction Surfacing
- Bituminous Products
- Road Studs
- Fast-drying MMA road marking products
- Paints & Primers
- Decorative Patterns - resin-bonded gravel surface treatment

For 90 years, Prismo Global has been leading the way in road safety and they continue doing so ensuring durable, easy-to-apply road marking solutions that stand up to tough conditions.

Being Present in the United Kingdom (UK), Italy and South Africa, Prismo Global's team is here to help you find the right solution for your project. Whether you're enhancing road safety, creating vibrant public spaces, or improving infrastructure, we're ready to support you with expert guidance and reliable products. Get in touch today to discuss how Prismo® can support your project's needs.

For more information, please visit <https://www.prismoglobal.com/> or contact them by email at info@prismoglobal.com



Experience matters

We manufacture our own products and take huge pride in ensuring they meet the diverse needs of our customers. Our ground marking solutions have been proven in the real world over decades and across continents.

From roads, airfields and car parks to cycle lanes, warehouses and playgrounds, our products simplify installation, reduce maintenance, and ensure enduring performance across a range of challenging conditions.

Sustainability matters

Our UK headquarters and advanced manufacturing facility operate entirely on renewable energy, and are ISO 14001 certified, reflecting our commitment to sustainability.

Our product range incorporates 91% bio-based resins, up to 45% recycled materials, and up to 60% repurposed waste from other industries. Designed for durability, our solutions also reduce the frequency of reapplication, helping to keep carbon emissions low.

Our products are crafted not only for high performance but also to reduce environmental impact.



Hot Applied Thermoplastics

Hard-wearing and fast-setting, hot applied thermoplastic is ideal for heavily trafficked roads. It hardens within approximately 60 seconds of application and can be applied as a flat or profiled line.

Prismo® operates the world's largest thermoplastic plant, producing an extensive range of products that cater for all levels of trafficking and climate. With decades of proven performance and numerous certifications across multiple markets, we provide solutions to meet every specification.



Lifeline®

A highly reflective white thermoplastic that can be applied by screed, extrusion or spray. It offers multiple retroreflectivity and performance levels, with all grades certified on UK road trails.



Crystalex®

A reflectorised thermoplastic in white or yellow that can be applied by screed or extrusion. Available in grades that are certified internationally, it is ideal for highways worldwide.



Crystalex® Moisture Proof

A reflectorised thermoplastic in white, designed for moist surfaces. Nordic certified, it extends the season and reduces weather delays. Applied by screed or extrusion.



Vibralline®

The original profiled marking system. Vibralline® provides visual and tactile feedback, ideal for edge lines and lane departure warnings. Certified for highway use, it is ideal for safety-critical areas and adverse weather.



Rainline®

A profiled thermoplastic that maintains retroreflectivity in rainfall. Certified for highways, its embossed structure maximises visibility. Available in white, it is applied by extrusion or screed and immediately embossed.



Crystalex® Multidot

Featuring Multidot technology that maximises light return for exceptional wet night visibility. Certified for highways, it is ideal for high-traffic, nighttime areas. Available in white, it is applied by specialist extrusion machinery.



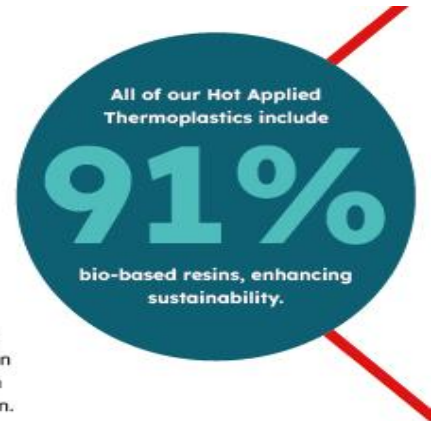
Guidemaster®

A non-reflectorised durable thermoplastic in white, yellow, deep cream, primrose, and a neutral base for custom colours. Ideal for high-traffic areas where there is Class 1 street lighting. Applied by screed or extrusion.



Guidemaster® UrbanGrip™

Non-reflectorised thermoplastic with enhanced skid-resistance. Available in white and blue, it is ideal for pedestrian crossings and bike lanes in busy urban settings. Applied by screed or extrusion.



Sprayplastic®

A spray-applied thermoplastic in white and yellow, with reflective and non-reflective options. Suitable for warmer climates, it is designed for high-volume marking. Certified for highways and applied using specialist spray technology.



Sunline™

A reflectorised thermoplastic offering a cost-effective solution for tropical climates. Available in white and yellow, and applied by screed or spray, its high softening point maintains shape and visibility in hot temperatures.



Duraffect™

A highly reflectorised thermoplastic with a 4-year warranty, offering excellent retroreflectivity and wet night visibility. Ideal for highways and city roads, it delivers outstanding durability and wear resistance. BAST certified, its long lifespan reduces maintenance needs, saving costs and lowering carbon emissions. Applied by extrusion.



Durabahn™

A reflective multipolymer thermoplastic with superior abrasion and impact resistance, ideal for heavily trafficked roads. Its durability is similar to MMA and Epoxy but it is applied using standard extrusion machinery. Independently tested in Bavaria in a real life setting, it delivers long lasting markings backed by a 5-year warranty.

Preformed Thermoplastics

Pre-cut and easy to apply by propane torch, preformed thermoplastics are ideal for precise markings and quick installations.

Engineered for durability, usability, colour retention, and grip, Thermaline® offers market-leading preformed markings for highways, airfields, car parks, crossings, playgrounds, urban spaces and more.



Thermaline® Regulatory

Thermaline® Regulatory delivers excellent retroreflectivity, skid resistance, and durability for heavily trafficked areas. The range includes delineation markings, standard warning, prohibition, and advisory symbols in various sizes for highways, local roads, and cycle lanes, improving guidance and safety.



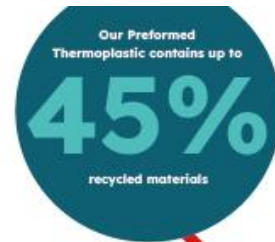
Thermaline® Car Park

Thermaline® Car Park provides effective solutions for car park markings and EV bays, delivering high performance with excellent traction to reduce slipping risks. Standard symbols are available, with custom options and colours for logos or other elements to align with branding.



Thermaline® Decorative

Thermaline® Decorative adds eye-catching and slip-resistant designs to playgrounds and public spaces for a durable, aesthetically pleasing look. The range features standard and customised designs in a wide variety of colours. From classics like hopscotch and snakes and ladders to creative custom patterns. We also specialise in bespoke designs, including logos for schools, clubs, and businesses, with additional colour options available upon request.



Bendyline™

A new versatile solution that allows you to create unique designs. Highly flexible, it easily bends and adapts to any shape. Ideal for play areas, its non-slip formula ensures safety, while vivid, durable colours bring vibrancy.



Urban Patterns™

A range of anti-skid preformed thermoplastic sheets that mimic traditional pavers and stones without the high cost, hassle, maintenance and safety concerns of the real material. The pattern and colour combinations of the sheets allow designers to create attractive pathways whilst preserving the charm of urban landscapes.



Decorative Surfacing

Decorative surfacing transforms urban environments into beautiful landscapes that are practical and long-lasting.

Stonegrip®

In use for over 20 years, Stonegrip® is a high-performance, decorative surface treatment for parks, gardens, urban regeneration and town centre enhancements. It features permanently resin bonded natural aggregate, offering exceptional durability, low maintenance, and non-slip safety without loose stones.

High Friction Surfacing

High friction surfacing treatments increase skid-resistance and enhance safety across a wide range of applications. Prismo® offers both cold and hot applied solutions in a variety of grades to suit different climates and specifications.



Cold Applied

Cold applied two-component systems for asphalt and concrete substrates.



Tyregrip®

A BBA/HAPAS Type I certified epoxy-based high friction surface treatment, for use on highways and high-risk locations. Proven for over 38 years, it combines a thermosetting binder with calcined bauxite or granite aggregates to form an extremely durable, skid resistant surface (5mm thick). Available in red, blue, green, buff, and black with more colours available on request, it delivers a skid resistance of ≥ 65 initially, rising to ≥ 70 with wear. A pedestrian grade (2-3mm thick) is also available for footpaths and cycleways.



Prismogrip™

A BBA/HAPAS Type I certified MMA-based high friction surface treatment, for use on highways and hazardous zones like bends, gradients and junctions. It uses a liquid, solvent-free MMA binder with calcined bauxite to create a highly durable, skid-resistant surface (5mm thick). Available in Buff and Dark with other colours available on request, it delivers a skid resistance of ≥ 65 .

Robur® Grip

An MMA-based surface treatment for highly trafficked urban areas such as cycleways, bus lanes, pedestrian crossings and train platforms. It can be applied with or without aggregates to provide customisable skid resistance. Available in a wide range of vibrant colours, it delivers a skid resistance of ≥ 45 , rising to ≥ 80 with aggregates.

Hot Applied

Hot applied by screed onto asphalt and pre-primed concrete substrates.



Zebraflex®

A BBA/HAPAS Type I certified thermoplastic high friction surface treatment, for use on highways and critical areas. With 100% high PSV calcined bauxite, it provides a robust, high friction skid resistant surface (5mm thick). Available in Buff, Dark, Red and Green, it delivers a skid resistance of ≥ 70 .



Textureflex®

A thermoplastic surface treatment for traffic calming and delineation in medium to high-traffic areas. With high PSV aggregates, it creates a durable skid resistant layer (3-5mm thick). Available in red, and a base that can be tinted to green, black or blue, it delivers a skid resistance of ≥ 65 .



Cycletrack™

A thermoplastic surface treatment for cycle lanes and delineation in light-trafficked areas. Incorporating high PSV aggregates, it forms a well-textured, skid resistant layer (2-3mm thick). Available in red and green, it delivers a skid resistance of ≥ 65 .



MMA Solutions

Fast-curing, tough-wearing, and certified for durability, Prismo® offers a huge choice of MMA colours and finishes for road markings and coloured surfacing in high traffic areas.



Robur® combines Methyl Methacrylate resins with hardwearing aggregates and premium pigments to deliver exceptional durability and long-lasting colour retention. This two-component system cures quickly in various temperatures, and offers a range of application methods including screed, extrusion, roller, spray, and profiled.

Designed for high-wear areas such as roundabouts, box junctions, bike lanes, crossings and heavily trafficked roads, it delivers day and night visibility even in rainfall, high resistance over time, and reduced maintenance.

Assessed for durability by BAST and AETEC, Robur® provides a reliable, fast-curing solution that minimises traffic disruption and enhances road safety, even in demanding conditions.

With specialist formulas for warmer and cooler climates, it is available in an extensive range of vibrant colours and different finishes. From smooth flat lines, textured and anti-skid surfacing to agglomerate and profiled markings for enhanced wet night visibility and audible alerts.



Paints & Primers

Versatile, quick drying and easy to apply, Prismo® offers a vast range of solvent and waterborne paints, primers and topcoats for line marking and coloured surfacing, with many grades certified for durability.



Solventborne

High-quality acrylic, alkyd, and epoxy-based paints deliver excellent adhesion, durability, and long-lasting colour with quick drying times. Suitable for colder application conditions, our paints are offered with and without premixed glass beads and antiskid materials, and at different performance grades, to suit all specifications.

Waterborne

Eco-friendly, high-performance paints with low VOC content and no harmful solvents. Fast drying and easy clean, they deliver intense colour and excellent durability. Available in numerous grades with or without premixed glass beads and antiskid. The range includes products for hot asphalt, and TT-P Type II paints certified for airfields.

Indoor and outdoor flooring

Coatings and markings for warehouses, factories, and car parks.



Bridge Joints

The original asphaltic plug bridge joint, introduced by Prismo® in the 1970's and trusted for its proven durability and flexibility. Designed to adapt with bridge movement, Thormajoint® is the industry benchmark for safety and long-lasting performance.

THORMAJOINT®

- **Inventor** of the asphaltic plug joint system
- **Proven** over 50 years, in over 50 countries
- **Trusted** solution for bridge expansion

**Recycled
tyres**
in components
boosts sustainability

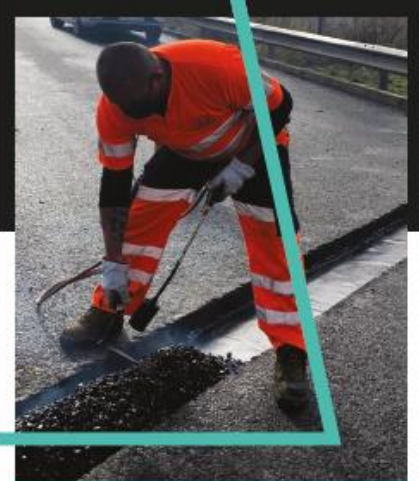
Thormajoint® was the first asphaltic plug joint system created and maintains its leadership today with unmatched reliability and performance.

Blending seamlessly with the road surface, Thormajoint® accommodates movement across the entire bridge deck, including verges and hard shoulders, and acts as a waterproofing system, protecting bridge bearings.

Trusted in over 50 countries, Thormajoint® is a durable, quiet, and cost-effective alternative to mechanical joints.

Benefits of Thormajoint®

- Lower cost compared to other bridge expansion joint systems
- Low levels of noise when trafficked
- Quick installation across carriageways
- Long service life
- Skid-resistant properties
- No anchoring system required
- Good resistance to wheel rutting
- Ability to accommodate longitudinal, rotational and transverse movements
- Suitable for all weather and climatic conditions, from arctic to tropical



A specialist process that can only be installed by certified professionals who are trained and approved by Prismo®



Crack Repairs

Surface cracks and joints are weak spots that can develop into dangerous and costly hazards. Prismo® has a range of systems that offer a long-term and economical solution.

Thormaseal™ 1401C

- Premium product
- Cracks: <5 mm to 40 mm
- Flexibility at low temperatures and flow resistance at higher temperatures
- Superior recovery properties
- High extension movement
- CE marked / Class N1

Thormaseal™ Tropical AP

- Mid range product
- Cracks: <5 mm to 40 mm
- Suitable for hot, tropical climates
- Fully pumpable which reduces erosion in equipment

Multiseal™ 40

- Premium product
- Cracks: <5 mm to 40 mm
- Supports extreme temperatures
- Remains flexible at low temperatures
- Normal to low extension movement
- CE marked / Class N2

Prismoseal™

- Cost effective solution
- Cracks: <5 mm to 40 mm
- Suitable for temperate climate

PFT Overbanding

- Rolls ready to use out of the box
- Cracks: <5 mm
- Simple application by propane torch
- High skid resistance: ≥60 SRT Initial and ≥50 SRT retained
- Up to 45% recycled material
- BBA HAPAS certified

Single System Fill and Overband

A NEW durable, skid-resistant single-pour solution for cracks <5 mm to 40 mm. Offering efficient application and reliable performance, it can also be used for pothole repair. Contains up to 45% recycled material.

Road Studs

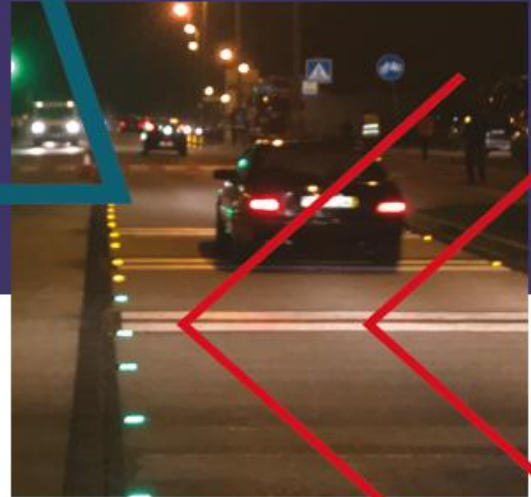
Road studs are a critical safety feature, providing visual guidance and audible warnings to drivers in dark or foggy conditions, and in adverse weather.

Prismo® is the exclusive distributor of Stimsonite® Road Studs across EMEA, a name synonymous with quality and innovation since 1964.

STIMSONITE®

CE UK CA
CERTIFIED

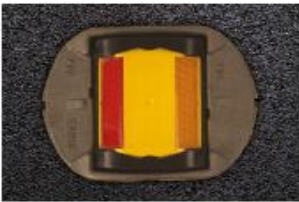
All-weather,
year-round
guidance that
won't black out
in rain, sleet, fog
or falling snow



Stimsonite® road stud models are the culmination of development and innovation dating back to 1964. They are proven to withstand the toughest conditions on today's heavily trafficked roads.

Surface Mounted (C80)

- Patented base ensures excellent adhesion to the road surface
- Injection moulded from durable polymers to endure heavy traffic
- Patented abrasion-resistant lens and advanced optics deliver superior retained reflectivity



Click Stud (381C)

- Cast iron housing for all climate conditions
- Easy fit reflector unit
- Rapid replacement of reflector at 'end-of-life'
- Reusable components



Inset (381/C80)

- Cast iron housing for all climate conditions
- Ramp angles to protect against heavy trafficking
- Snow-ploughable for continual guidance in all types of weather



Snow Ploughable (L101)

- Hardened cast iron housing to withstand the harshest conditions
- Specifically engineered to improve plough-ability and prevent reflector damage



Bundy® Pads

- Exceptional adhesion
- Resists oil and weather
- Quick and easy to apply with a propane torch
- Up to 45% recycled material



Grout Adhesive

- High strength bond
- Short cooling time
- High flexibility at low temperatures while keeping flow resistance

Lenses are available in white, yellow, red, green, blue, and orange to meet all regulatory requirements. The lenses can be housed in a wide range of polymer colours, bi-directional (two-way) or uni-directional (1 way) as required.



ACOCHEM ADVANCED CONSTRUCTION CHEMICALS

ACOCHEM (Advanced Construction Chemicals) is a Belgium based, independent system house for specialty chemicals, developed for use in construction, civil engineering, oil & gas, mining and other industries. ACOCHEM specializes in R&D and manufacturing of leak sealing and geotechnical injection resins, high performance coatings, waterproofing and concrete repair.

- **LEAK SEALING INJECTION**
- **GEOTECHNICAL INJECTION**
- **WATERPROOFING**
- **STRUCTURAL REPAIR**

APPLICATION PICTURES





ACOCHEM

ADVANCED CONSTRUCTION CHEMICALS

Advanced Construction Chemicals BV
Frankrijklei 5, 2000 Antwerpen, Belgium
www.acochem.com | info@acochem.com

GENERAL INFO

ACOCHEM BV is an independent system house specializing in advanced construction chemicals for waterproofing, geotechnical solutions, concrete repair and high-performance coatings. Our expertise spans research and development, manufacturing, sales, marketing, application techniques, and consulting. Headquartered in Belgium, we operate globally through a network of construction chemical experts and production platforms.

WHY ACOCHEM?

ACOCHEM firmly believes that successful business thrives on the principle "Your succes is our priority". Proximity to our stakeholders, sustainability and customer service are some of our core values. Partnering with us means more than just placing orders and receiving products. Beyond our product expertise, we actively collaborate with our long-term partners, drawing on our extensive international experience in the construction chemicals industry to offer tailored solutions.

COMPANY VALUES:

Loyalty: We foster long-term partnerships rooted in trust and dedication, ensuring consistent support and mutual growth.



Proximity: By being close to our clients and suppliers, we deliver quickly and adapt seamlessly to evolving needs, enhancing project efficiency.



Sustainability: Our commitment to sustainability spans responsible sourcing of raw materials, durable high-quality products, and relationships that benefit both industry and community.



Efficiency: We streamline operations and communication, enabling us to meet project timelines and maintain cost-effectiveness.



Customer Service: We provide personalized support, short communication lines, and flexible solutions, responding quickly to meet unique client needs on a global scale.



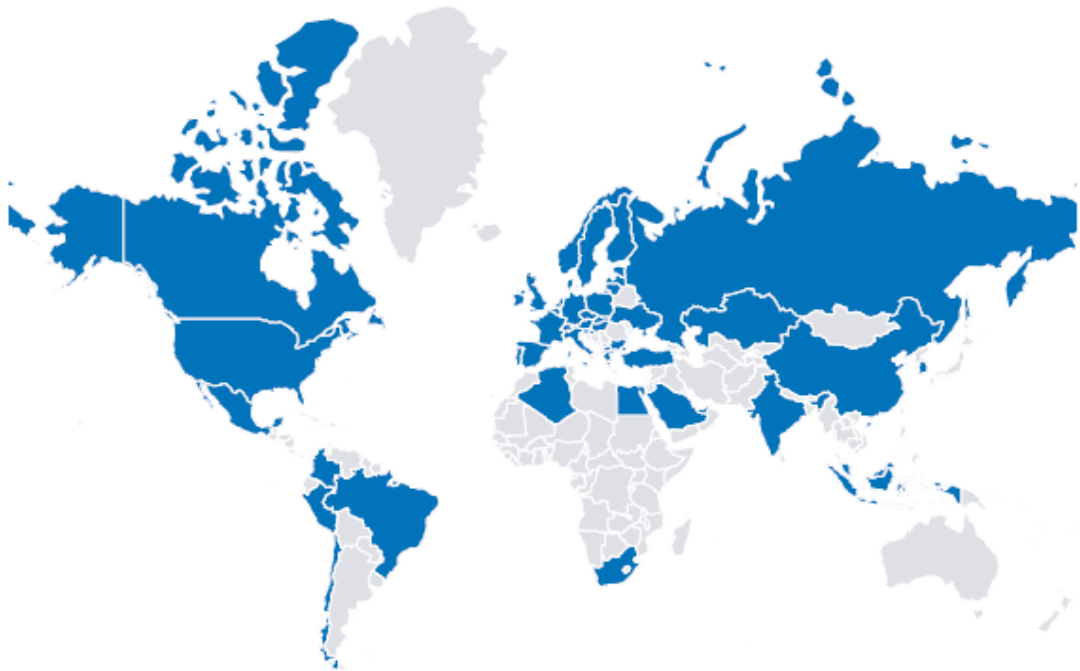
ACOCHEM

ADVANCED CONSTRUCTION CHEMICALS

Advanced Construction Chemicals BV
 Frankrijkde 5, 2000 Antwerpen, Belgium
www.acochem.com | info@acochem.com

GENERAL INFO

ACOCHEM is a leading system house and manufacturer of construction chemicals with a strong global presence. Through its extensive network of international distributors, applicators and private labels the company ensures its innovative products reach markets worldwide. Known for its reliable and high-quality solutions, ACOCHEM has built strong, long-term relationships with clients across various industries. This wide-reaching network, combined with exceptional client support, positions ACOCHEM as a trusted partner in the sector of construction chemicals, offering tailored solutions that meet the ever-evolving needs of projects on a global scale.



SOLUTIONS:

Chemical Injection Resins | PU-based, Acrylic based, Urea-silicate based



Geotechnical Injection Resins | Polyurethane based georesins



Miscellaneous | Swell joints, High performance coatings, Waterproofing



ACOCHEM

ADVANCED CONSTRUCTION CHEMICALS

Advanced Construction Chemicals BV
Frankrijkde 15, 2000 Antwerpen, Belgium
www.acochem.com | info@acochem.com

PRODUCT RANGE

CHEMICAL INJECTION RESINS

POLYURETHANE BASED

One component hydrophobic system injected with a one component pump

PURINJECT 1C 115 ECO

One component, solvent free, ecological polyurethane injection foam, ideally suitable for water cut-off in concrete, masonry structures, rock and sandy soils. Reaction with water yields a semi flexible polyurethane closed cell foam. Injected with a one-component pump. Use with 6 to 10% catalyst.

PURINJECT 1C FLEX

One component, solvent free, polyurethane injection foam, ideally suitable for water cut-off in wet dynamic cracks and joints. Reaction with water yields a very flexible polyurethane foam. Injected with a one-component pump. Use with 6 to 10% catalyst. Soft flexible foam with closed cells.



PURINJECT 1C 55LV

One component, solvent free, very low viscosity polyurethane injection foam, ideally suitable for water cut-off in concrete, masonry structures, rock and sandy soils. Reaction with water yields a semi flexible polyurethane foam. Injected with a one-component pump. Use with 6 to 10% catalyst.

PURINJECT 1C SOIL

Solvent free very low viscosity polyurethane injection resin for soil stabilization. Harmless for the environment and resistant to biological influence.



One component hydrophilic system injected with a one or two component pump

PURINJECT 1C HYDROFOAM

Hydrophilic and solvent free low viscosity, closed cell polyurethane injection resin ideally suitable for expansion joints and tunnel segment joints. Used as a 1 or 2 component system mixed with water.

PURINJECT 1C HYDROGEL

Hydrophilic one-component, solvent-free, polyurethane injection system. Produces a flexible foam or an elastomeric gel, depending on dilution. Injection using a two-component pump with water as second component.



ACOCHEM

ADVANCED CONSTRUCTION CHEMICALS

Advanced Construction Chemicals
Frankrijkde 15, 2000 Antwerpen, België
www.acochem.com | Info@acochem.com

PRODUCT RANGE

CHEMICAL INJECTION RESINS

POLYURETHANE BASED

Two component hydrophobic system injected with a two component pump

PURINJECT 2C W

A fast-reacting two-component polyurethane injection resin, FCH and halogen free. For sealing and hardening in water-carrying zones, particularly against pressurized water.

PURINJECT 2C D

A fast-reacting two-component polyurethane injection resin, FCH and halogen free. Hardening of strongly disaggregated, dry or lightly moist mountainous zones.

PURINJECT 2C THIX

Fast reacting 2 component urethane thixotropic injection resin for stopping strong water ingress.

Two component hydrophobic system injected with a one component pump

PURINJECT 2C ELASTIC LV

Two component, low viscosity, polyurethane elastomeric injection resin for the elastic sealing of dry and wet dynamic cracks in concrete structures. Slow reaction to an elastic resin (pot life: 45 min). Injection with a one component pump.



ACOCHEM

ADVANCED CONSTRUCTION CHEMICALS

Advanced Construction Chemicals BV
Frankrijkde 15, 2000 Antwerpen, Belgium
www.acochem.com | info@acochem.com

PRODUCT RANGE

CHEMICAL INJECTION RESINS

ACRYLIC BASED

Leaksealing

ACRYLINJECT ELASTIC

Elastic methacrylate based injection system for sealing and consolidation works in presence of water. In wet or dry conditions, the volume of the gel increases or decreases in a reversible manner assuring perfect waterproofing and perfect adhesion.

ACRYLINJECT R

Methacrylate based injection system for sealing and consolidation works in presence of water. In wet or dry conditions, the volume of the gel increases or decreases in a reversible manner assuring perfect waterproofing or injection of preinstalled injection hose, or channels in membranes.



Geotechnical soil stabilisation

ACRYLINJECT OG

Non-toxic, methacrylate based injection system for sealing and consolidation works in presence of water. The low viscosity of the product assures high fluidity. It's a hydrophilic system with a controlled set time.



UREA SILICATE BASED

Two component system injected with a two component pump

SILINJECT 2C FOAM

Organo-mineral, non-flammable two-component foam for filling cavities, sealing and hardening in tunnelling and mining.

SILINJECT 2C FLEX

Non-foaming, fast-curing, elasticized silicate - injection resin for hardening fissured and fractured mountainous zones in tunnelling and mining.



SILINJECT 2C THIX

Organo-mineral, non-flammable two-component thixotropic resin for anchor bolting in tunnelling and mining.



ACOCHEM

ADVANCED CONSTRUCTION CHEMICALS

Advanced Construction Chemicals BV
Frankrijkde 15, 2000 Antwerpen, Belgium
www.acochem.com | info@acochem.com

PRODUCT RANGE

GEOTECHNICAL INJECTION RESINS

POLYURETHANE BASED

Georesin

GEORESIN is a structural two component polyurethane foam which - injected into voids beneath concrete slabs, walkways, foundations, walls, etc. - stabilises the underground and lifts it to the desired height without excavation.

GEORESIN 035
GEORESIN 055



Georesin High viscosity

GEORESIN is a structural, high-viscosity, two-component polyurethane foam that, when injected into voids beneath concrete slabs, walkways, foundations, walls, and similar structures, stabilizes the substrate and lifts it to the desired height without requiring excavation.

GEORESIN 035 HV
GEORESIN 055 HV



Georesin Cavity filling

GEORESIN (Cavity Filling) is a structural two-component polyurethane foam system, designed for undersealing and void filling under concrete slab sections. The slow speed reactivity profile allows for excellent flow characteristics when used as an undersealing and void fill material. It will run and level itself and expand slowly with low heat.

GEORESIN 035 CF



ACO CHEM

ADVANCED CONSTRUCTION CHEMICALS

Advanced Construction Chemicals BV
Frankrijkde 15, 2000 Antwerpen, Belgium
www.acochem.com | info@acochem.com

PRODUCT RANGE

MISCELLANEOUS

SWELL JOINTS

Polymer based

HYDROSTOP

HYDROSTOP is a hydrophilic, 100% expansive polymer waterstop for the sealing of concrete construction, concrete-steel joints and underground precast elements. HYDROSTOP is standard delivered with a swell retardant coating. Free swelling: 250%.



Bentonite based

BENTOSTOP

Hydrophilic bentonite-butyl swell joint for the sealing of concrete construction joints or to be used as a system component in a bentonite clay liner or clay panel waterproofing system. Free swelling: 350% - 400%. Use a metal net for vertical applications.



HIGH PERFORMANCE COATING

100% Pure polyurea

UREASPRAY 400

2 component, 100% pure aromatic, hot sprayed polyurea coating with excellent chemical and mechanical properties.



ACOCHEM

ADVANCED CONSTRUCTION CHEMICALS

Advanced Construction Chemicals BV
Frankrijkde 15, 2000 Antwerpen, Belgium
www.acochem.com | info@acochem.com

PRODUCT RANGE

MISCELLANEOUS

WATERPROOFING

Sprayed Tunnel Membrane

STM SEAL

STM Seal is an elastic, polymer based spray applied waterproofing membrane, predominantly used in (below grade waterproofing) and tunnelling. Waterproofing membrane for application on sprayed or cast in situ concrete.



Crystallisation of concrete

CRISTALPROOF ADMIX

System for waterproofing concrete in its entirety by crystallisation, designed to improve the properties of the concrete. Waterproofs concrete effectively and reduces shrinkage cracks.

CRISTALPROOF LI

System for waterproofing concrete by crystallisation, which can be applied as a slurry, powder or spray.



CRISTALPROOF WATERSTOP

For stopping water leaking through cracks and anchoring. Non-shrink, high-bond, hydraulic cement, with fast-setting (2 minutes) waterproofing action by crystallisation.





ACOCHEM

ADVANCED CONSTRUCTION CHEMICALS

Advanced Construction Chemicals BV
Frankrijkde 15, 2000 Antwerpen, Belgium
www.acochem.com | info@acochem.com

PRODUCT RANGE

CHEMICALS FOR TUNNELLING AND CIVIL ENGINEERING

Polymers

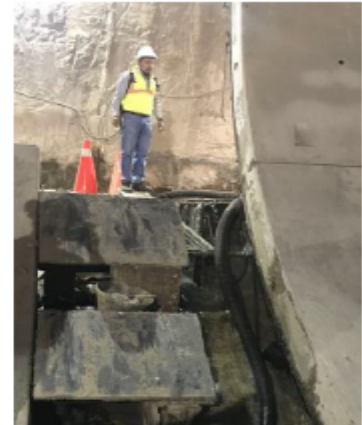
info@acochem.com

Resins

info@acochem.com

Defoamer

info@acochem.com





HYGT Chemical was founded by professionals from various chemical companies with extensive experience in the industry; the objective of establishing the company is to manufacture and market industrial chemicals for the oil, mining and road construction sectors.

In recent years and with an emphasis on technical and commercial innovation, we delivered tailored solutions to our clients establishing a solid position in the chemical market. Our aim is to maintain the quality of our products and the agility of our services.

HYGT Chemical has a strong team; all of which are professional and dedicated to technical development, industrial processes, and commercial consulting. Our specialists are trained to give technical presentations to clients to clarify the advantages of chemical solution programs and recommend customized alternatives for value additions on every individual project.



HyGT SS21

SS21 is a Sand Stabilizing product designed for Engineering purposes.

It has been formulated, tested and applied effectively in Coarse Grained soils and soils with low fines content.

Silty Soils, Sandy Soils and Gravelly soils turned into a "Mass", linked with SS21.

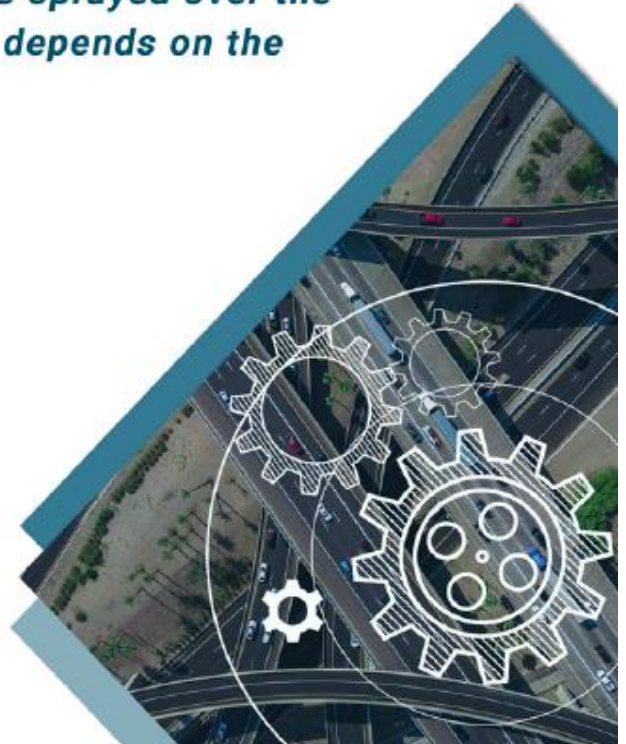
This process can be undone as well, coming back easily to the original situation by using other of our products.



Roads Engineering

SS21 has been successfully used in Roads build-ups for Roads, highways, site access in Oil&Gas Sites, Mining and general Civil Engineering Works.

This product is simply applied in the compaction water, mixed. As well, can be sprayed over the soil surface. Specifications depends on the use.





ROADS ENGINEERING

For Roads Engineers, the following properties of interest are improved:

CBR

CBR (*California Bearing Ratio*) values are raised considerably. The improving depends on the soil condition and the amount of product used. Our technical group can give detailed information of our lab test results for different soil conditions and amount of product used.

UCS

UCS (*Unconfined Compression Strength*) values usually in Sandy/Gravelly soils are null, as the soil has no self-standing condition to develop these tests (Frictional soils). Regarding this, the cohesion generated by the adhesion of SS21, allows the possibility to the samples to self stand and develop these tests, with high results as the curing process progress.

DUST

Dust Control, is required in roads, as the dust highly reduces the visibility. With SS21, no dust is merging from the surface, as the product is highly effective for keeping the particles adhered. Dust in air measurements gives us low to null values in comparison with no treatment condition, and complying with the HSE requirements.



ROADS ENGINEERING

For Roads Engineers, the following properties of interest are improved:

PERMEABILITY

Permeability of soils can be reduced from high permeability to "Impermeable". The waterproof effect that SS21 does to the soil, generates an strong adherence and makes possible to let the water flow in the top of the sand. The results of this condition are tested, and proved with lab testing and sites applications. Temporary water channels has been done in sand with this product.

EROSION

Erodibility of soils in roads is a huge problem. Using SS21, roads in Oil&Gas sites that has weekly maintainance, are now yearly maintained as general protocol, but they can allow more time between maintainance.

WET-DRY CONDITIONS

Dry/Wet cycles and submerged condition of soils, is one of the main causes of deterioration of road build-ups. Our tests has shown that a small block of sand treated with SS21, can stand months under the water without any change. As well, samples for testing shown that after submerged condition, the values has not experience significantly changes, and comply with the same standards in soaked and unsoaked condition.



DUNES AND COASTAL EROSION & STABILITY

Dunes erosion has been effectively treated with SS21. Dunes and roads in sand between the dunes, became stable after SS21 is applied. The erosion from water and wind is not longer a problem, and the dunes and sand roads are fully transitable for pedestrians and light vehicles with simple spray application.

Stable dunes are made with a simple mix of Sandy soil and SS21, safe and strong. The landscaping can be easily solved using SS21 for the adherence of particles of Coarse soils. SS21 is a durable and strong solution for old problems that are now still an issue around the world.

Coastal environments, usually with Coarse grained soils, can be easily treated with SS21, and the surface can be made as required, only mixing the soil with SS21, or applying as spray over the modelled surface. Coastal erosion in Sandy soils has been a problem until SS21 was developed.



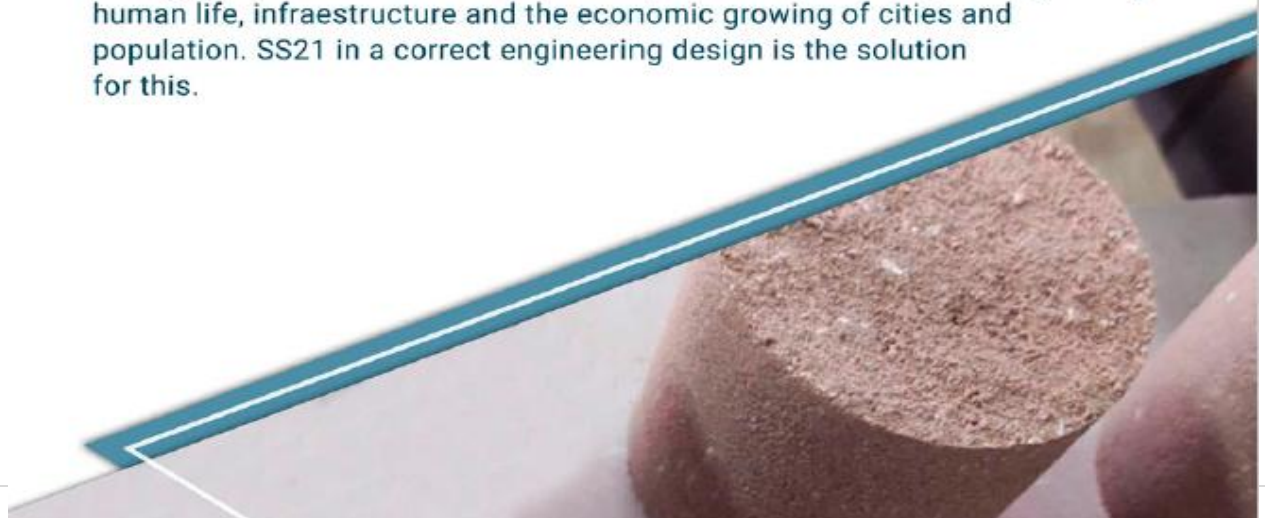


SLOPES/RAVINES STABILITY & EROSION

The loss of moisture in slopes and ravines is a big issue for the stability of them. As well, the surface water infiltrations can generate high loads and unstable conditions. SS21 has been proved effectively to keep sand stable and to impermeabilize surface, giving more certainty to the Stability calculations of slopes.

Slopes and ravines in sandy soils are usually experiencing sliding during their lifetime. The impermeability, cohesion and strength that SS21 gives to the soil, reduces the risk to the slides. Our technical team is specialist in developing solutions for these conditions.

Erosion in Slopes generates preferential channels for the water flowing from the surface. These channels turn then into highly unstable conditions that increase considerably the risk of failure of the slope, and are a usual cause of sliding. There is no need to expose a slope/ravine to that risk, usually risking human life, infrastructure and the economic growing of cities and population. SS21 in a correct engineering design is the solution for this.





DUST

Dust in construction sites and roads is usually a problem for HSE and for road safety, as the dust can be inhaled by the people in site and surrounding populations, and the dust in the air generates bad visibility condition, main cause of accidents in some sites environments.

SS21 has been proved in Oil&Gas roads in deserted locations, and the reduction of Dust has been approved by the HSE managers of the site, considering it a good tool for avoiding risk for breathing and possible collisions due to the reduction of visibility.



TUNNELING, DRILLING, WATERPROOFING AND INJECTION

TUNNELING, DRILLING, WATERPROOFING AND INJECTION

SS21 is now being studied, modified and applied as required for highly complex engineering solutions. Our product is specially modified for each of this applications and to suit the project requirements, with addition of other of our products. These applications are experimental and are in continuous Research and Development with excellent results in real cases and in laboratory.

SS21 has been effectively applied to make "Temporary" casings while drilling in sand, with the adequate drilling techniques and tools, a good instrument for ground engineering and drilling companies.

Tunnel leaks has been controlled using SS21. Using SS21 as chemical grouting, high porosity loose soils has been turned into a more cohesive and strong column below foundations. Surrounding areas of pipes and manholes have been impermeabilized and sealed from groundwater. Open water channels in sand. All this applications are just a few of the new trends in SS21, a live chemical product for High quality solutions in Engineering

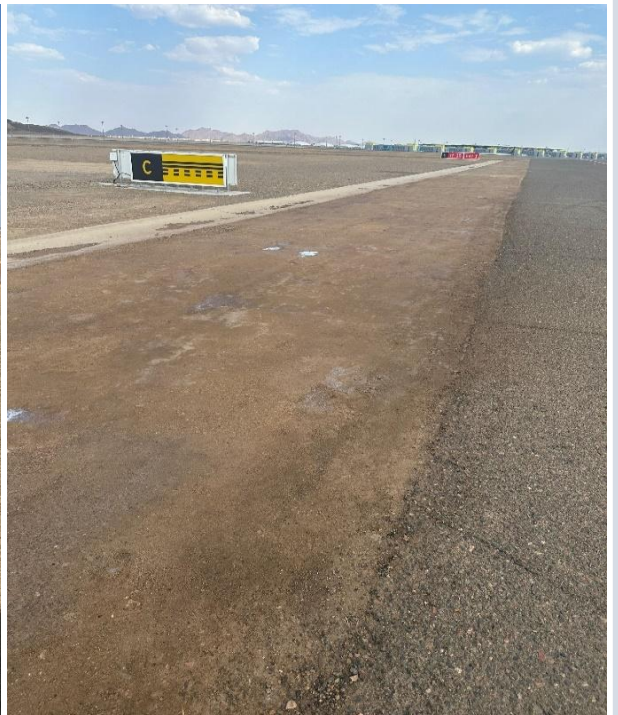
These special applications of our product, keeping us looking forward new improvements and solutions for challenges in Ground Engineering. Please do not hesitate in contact our Technical Team for more information about the possibilities of our product and to share some information about your projects.



APPLICATION PICTURES



SAND STABILIZATION





DUST CONTROL





Dewmark is a leading European company specializing in expansion joint systems since 2007. Our engineers design and manufacture expansion joint profiles for a wide variety of applications worldwide.

With a presence in over 15 cities across 11 countries, Dewmark has earned a strong reputation as a reliable and trusted partner in the construction industry.

Drawing on over a decade of experience, we have successfully completed more than 2,000 projects of varying scales and complexities—and continue to support diverse construction needs globally.

Our mission is to deliver high-quality expansion joint profiles using the latest technologies and premium raw materials sourced from leading suppliers in Russia and Europe. We also provide customized design and selection services tailored to the specific requirements of each project. Expansion joints play a critical role in construction by distributing stress and strain, ensuring structural stability and durability. Therefore, it is essential to choose a reliable, experienced, and proven partner like Dewmark.

EXPANSION JOINTS PROFILES



EXPANSION JOINTS SYSTEMS

Various profile systems used to design and isolate expansion joints of buildings from a large number of external factors.

Expansion joint profiles: more than 80 types and over 2000 standard sizes - the range of Dewmark profiles is one of the most extensive in the world and allows you to meet any customer needs anywhere in the world. Our own engineering office can develop and release a new type of profile within one month.

EXPANSION JOINT SYSTEMS

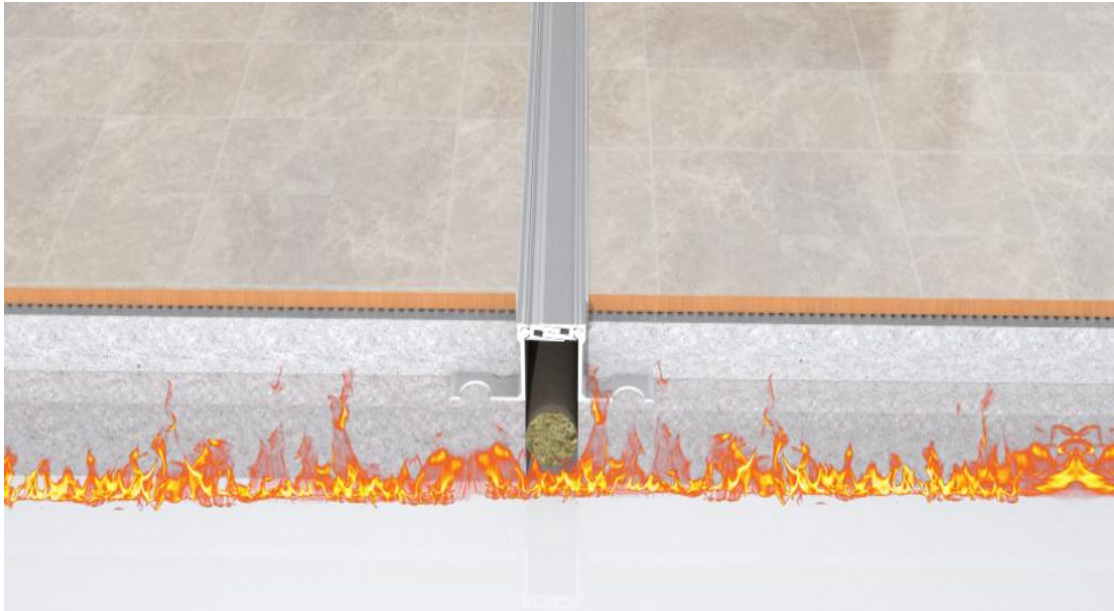
Waterstops: PVC profile systems used for waterproofing the recessed parts of buildings from water penetration. More than 20 types of waterstops capable of withstanding water pressure up to 3 atmospheres.

WATERPROOFING

Special cords and barriers made of non-combustible materials used for fire protection of building compartments and protecting both from the penetration of fire and performing heat and sound insulating functions.

DEWMARK FIRESTOP

FIRESTOP

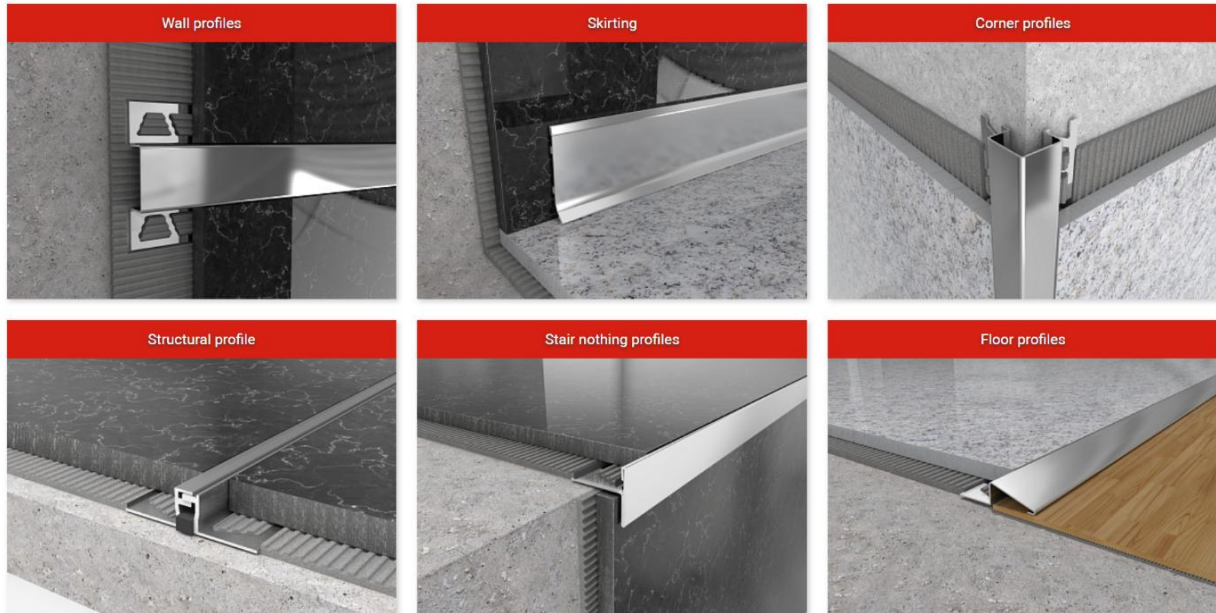


Fire barriers with fire resistance up to 4 hours (EI 240) protecting building compartments from the spread of fire through expansion and structural joints from 10 to 1000 mm.



Fireproof cord made of basalt fiber are used for construction gaps with a width of 5 to 150mm. The fire resistance EI 240 allows you to keep the flame up to 4 hours.

DECORATIVE PROFILES



DECORATIVE PROFILE

A series of profiles developed for architects and interior designers, combining the latest trends in interior decoration. The variety of shapes, colors and textures allows you to complement the interior with the most refined accents and details from classic to high-tech. Flat, voluminous, embossed geometric shapes create incredible design solutions.

Profiles for floors

Profiles for walls

Skirting

Profiles for corners

Stair nosing profiles

DECORATIVE PROFILES



PROFILES FOR WALLS



PROFILES FOR CORNERS



Western Material & Design and Cornerstone Construction Material have joined forces to deliver innovative, high-quality cement, epoxy, and polymer solutions tailored for the heavy construction industry.

With more than 30 years' experience in developing and manufacturing cutting edge products, **FastTrac** Construction Products are known for performance and consistency. When combined with our commitment to excellent customer service you have a winning combination that brings value to the construction industry.

FastTrac products include rapid strength cements and concrete, repair mortars, high performance grouts, a full range of epoxies, mixing systems and our latest innovation – Hybrid Polymer Concrete.

- Opened for traffic in less than 3 hours
- Very low shrinkage
- No priming or curing necessary
- Clean with water immediately after use
- Low permeability and improved durability
- Excellent resistance to freeze/thaw
- Excellent workability
- Made in the USA

FasTrac ReSurfacer is a two-component, rapid setting, low shrinkage mortar that is used to overlay existing pavements and floors. FasTrac ReSurfacer is mixed with polymer and water on site, and is placed with suitable placement equipment and finished to the desired texture. For applications thicker than 1-inch, the mortar should be extended with 3/8-inch aggregate.



FASTRAC RESURFACER



FOR PARKING GARAGE APPLICATIONS





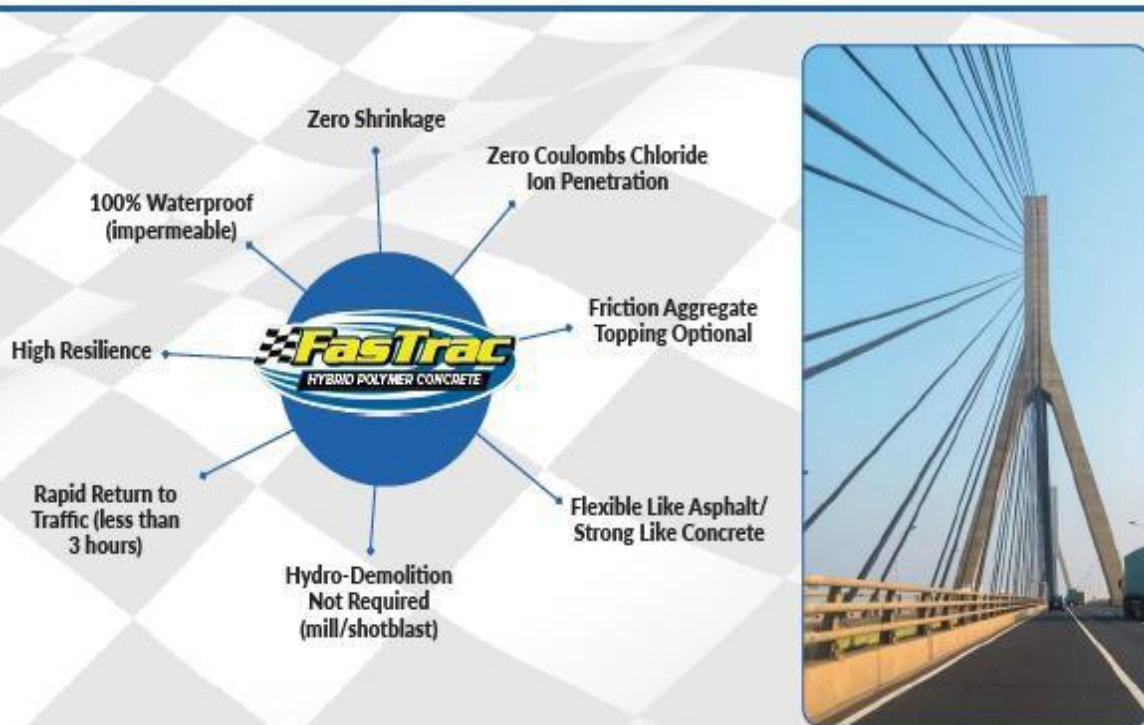
FasTrac Construction Products

With more than 30 years experience in developing and manufacturing cutting edge products, FasTrac Construction Products are known for performance and consistency.

FasTrac manufactures rapid strength cements and concrete, repair mortars, high performance grouts, a full range of epoxies, and specialized mixing systems specifically tailored to bridge deck overlays.

CE700 HPC Overlay

Flexible Like Asphalt. Strong Like Concrete. FasTrac Hybrid Polymer Concrete Overlay!



FasTrac HPC Used on Sedalia, MO Bridge Deck



Repaired sections were traffic-ready in just 2 hours!



FasTrac Hybrid Polymer Concrete



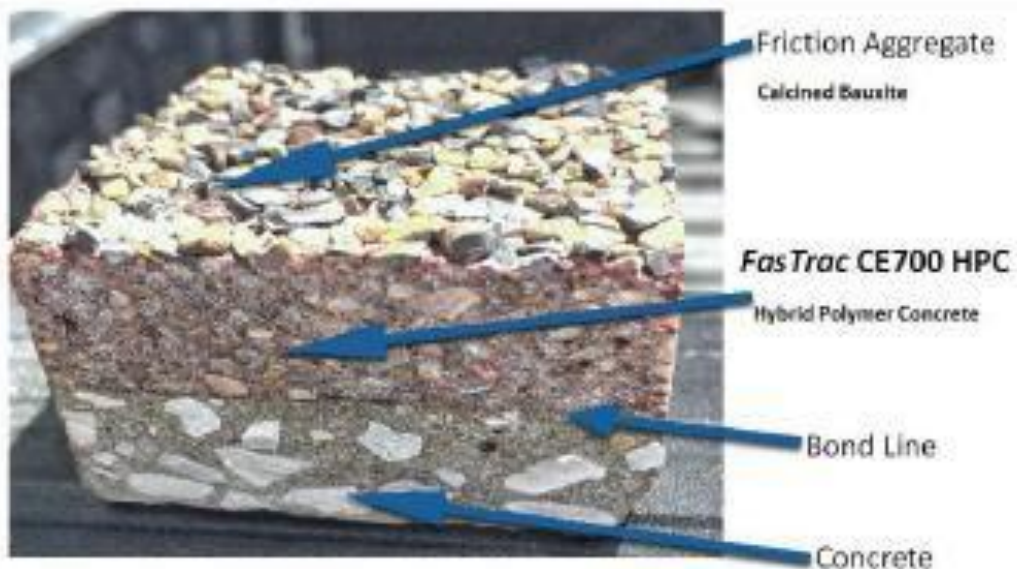
FasTrac CE700 HPC Overlay is a three-component hybrid polymer concrete system containing engineered polymer resins and specially selected aggregates. When properly mixed, the reacted chemistry produces a durable polymer concrete composite designed for bridge deck over-lays, patching, and resurfacing applications. Specifically designed to resurface and restore prepared concrete surfaces from 3/4" to 12" in one application lift. The system can be utilized for variable depth cross sections. Return to traffic within 3 hours.

Features

- Zero shrinkage
- 100% waterproof (impermeable)
- Zero coulombs chloride ion penetration
- High resilience
- Flexible like asphalt/strong like concrete
- High tensile strength
- Highly resistant to reflective cracking
- Friction aggregate topping optional
- Can be placed at as little as 3/4" depth
- Hydro-demolition not required (mill/shotblast)

Physical Properties

- | | |
|-----------------------------|-------------------------------|
| • Resilience | > 70% |
| • Tensile Strength | > 1,000 psi |
| • Tensile Elongation | > 100% |
| • Compressive Strength | 3,000 psi |
| • Adhesion (bond) Strength | > 500 psi (substrate failure) |
| • Chloride Ion Permeability | 0 Coulombs |



NO PRIMER REQUIRED



At **Aerogreen Solutions LLC** our mission , vision, values and operating principles have been carefully refined over the past 30 years to guide our commitment to manufacturing AEROGREEN®—a comprehensive line of environmentally preferred specialty cleaners.

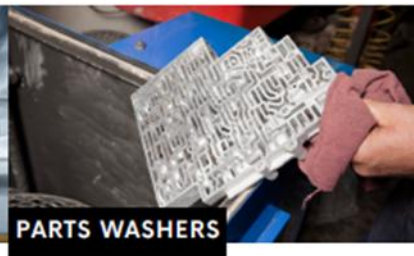
We're a dynamic company with a strong sense of who we are, and an unyielding commitment to putting our customers, and the environment, first.

As the manufacturer of AEROGREEN® Specialty Cleaners, we have established the complete integration of environmental, health, safety, and security (EHS&S) management practices throughout our operations to insure we offer nothing but the highest quality products. Our professional, well trained sales, manufacturing and customer service departments are committed to understanding your cleaning requirements providing you with the specific products that best suit your needs. The **Aerogreen Solutions** team believes it's everyone's responsibility to help transform the environment into a cleaner, healthier place to live by going green whenever possible. **Aerogreen Solutions** innovative, eco-friendly cleaning products will help your company

Industrial Cleaning Solutions



AVIATION



PARTS WASHERS



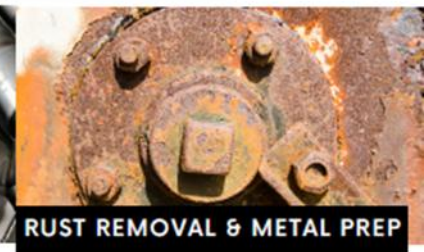
PAINT PREP



CLEANERS & DEGREASERS



INK & COATING REMOVER



RUST REMOVAL & METAL PREP

AEROGREEN 4035 - RUNWAY RUBBER REMOVER



100% biodegradable, eco-friendly cleaning solution that emulsifies rubber from the runway surface dissolving the rubber residue into the solution. When combined with heavy duty sweeper / broom scrubbing action or hydro agitation, AEROGREEN 4035 thoroughly removes runway rubber residue, making the touch down zone safe for landing aircraft. It is a residue-free, non-hazardous, non-flammable, non-combustible solution that contains no caustic ingredients, leaving no harm to metals, runway pavement seals and caulking compounds, runway lights, landing aircraft or airport personnel.

REVITALIZING THE RUNWAY:



BEFORE



DURING CLEANING



AFTER

AEROGREEN 4025 - MOLD, MILDEW, & ALGAE CLEANER



Eco-friendly cleaner that quickly and safely removes mold, mildew and algae from airfield surfaces and surrounding buildings. AEROGREEN 4025 makes your airfields clean and safe again by improving the visibility of airfield markings. This water based, non-hazardous cleaner can be used with both cold and heated high pressure washers to quickly and safely remove a variety of residues from airport terminals, tarmacs, hangars, parking lots and ground support equipment.

- Certified by Boeing, McDonnell Douglas, EPA, & AST specifications
- Safe on equipment, stormwater systems, oil/water separators
- Easy application & No Harmful Toxins or Solvents



Mildew is equally or even more slippery than rubber under rainy conditions by reducing the surface friction. Stay steps ahead with a proactive approach—harness the power of Aerogreen 4025 to cleanse and safeguard your runway surfaces and markings from algae's impact.

AEROGREEN 4015 - AIRCRAFT EXTERIOR CLEANER



Ready To Use Aircraft Exterior Cleaner is an eco-friendly, water-based cleaner that safely and efficiently cleans your aircraft, making them easier to maintain and safer to operate. This non-flammable, readily biodegradable cleaner can be directly used without dilution, rinses free with water, and leaves no residue or film. AEROGREEN® 4015 quickly removes carbonaceous soils associated with jet engine and helicopter operations, as well as caked on dirt and grime. AEROGREEN® 4015's state-of-the-art technology makes it the safest and the most effective aircraft cleaner on the market today.

- Certified by Boeing, McDonnell Douglas, EPA, & AST specifications
- No VOC's, safe on all types of surfaces
- Easy application & No Harmful Toxins or Solvents



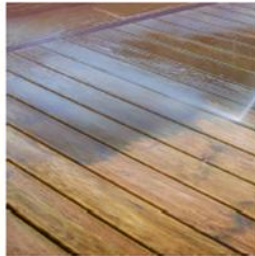
Offering a comprehensive solution, our biodegradable cleaner tackles light to heavy soils, eliminating the need for multiple products and reducing hazardous waste disposal costs while ensuring environmental safety.

AEROGREEN 4130 - INDUSTRIAL CLEANER & DEGREASER



Cleaner & Degreaser is formulated for pressure washing applications in industrial, commercial, and for both interior and exterior environments. Quickly and easily removes built-up dirt, oils, greases, fuel residue, mold, mildew, fungus, algae along with other contaminants from the surface. The use of the cleaner will prevent the return of mold and mildew. Using Aerogreen 4130 will significantly reduce surface contamination and increase efficiency over just plain water washing.

USE CASES:



USE IT ON THE FOLLOWING SURFACES:



stucco



steel



porcelain



stone



brick



plastic



aluminum



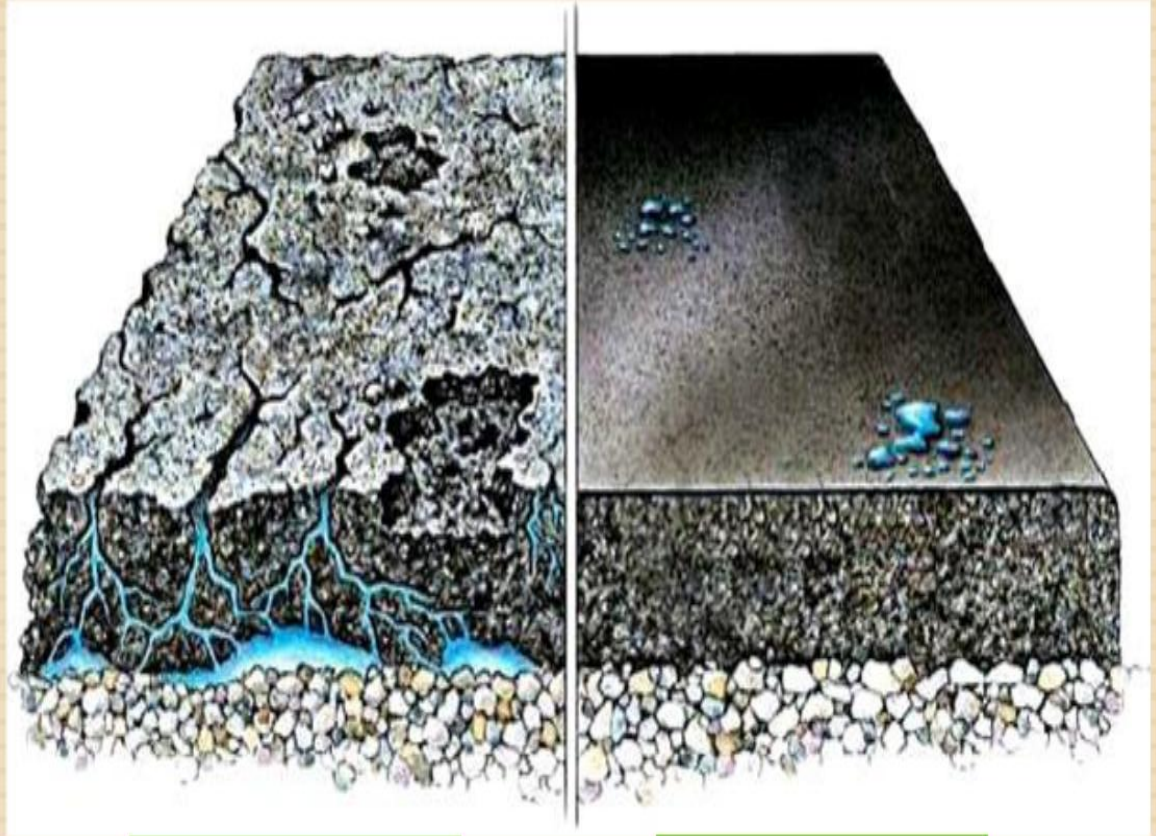
wood



Gordon and Richard Rayner founded **CPM (California Pavement Maintenance Company)** in 1979 after several years in the pavement maintenance business. The goal of CPM was and is today, the field of pavement preservation at affordable costs. Over the years CPM has evolved into several sister companies:

- **RaynGuard Protective Materials** which manufactures prepackaged sealcoat and pavement surfacing products.
- **Rayner Equipment** which designs and builds slurry and Micro Surfacing machines (RoadSavers), sealcoat squeegee and spray applicators (PavementSavers) and stone filled pavement surfacing spray applicators (RaynMakers).
- **Carbonyte Systems** which provides asphalt technologies and intermediate specialized chemicals.
- **Asphalt Rubber Systems** which provides crumb rubber technology and additives for the liquid asphalt field.

RaynGuard is a recognized leader in innovative asphalt preservation technology. They provide quality, cost effective solutions for protecting and maintaining your pavement assets. RaynGuard's premium materials can be found on parking lots, roadways and airfields in many countries around the world. RaynGuard provides the best customer service available from a family with over 40 years of construction experience. They have industry knowledge, application experience, and the complete understanding of the materials and logistics necessary to make your project a success. At RaynGuard, their goal is to have you rely on us for more than just products, we are here to answer questions, offer helpful information, and to help you provide your customers with a valuable experience.



Without SteelGuard

With SteelGuard

Why use SteelGuard?

SteelGuard not only is designed to protect your pavement from the elements but may be modified to provide greater pavement friction and skid resistance.

SteelGuard

- Made and exported by Rayner Equipment Systems in Sacramento, California.
- Can be modified for whatever job you may have:
 - ▣ SteelGuard (standard product)
 - ▣ SteelGuard Plus (modified product which can be used on **Airports, and Highways.**)

SteelGuard vs other Sealcoats

- ❑ Environmentally friendlier than other sealcoats
- ❑ Lasts longer than other sealcoats
- ❑ More aesthetically pleasing for longer
- ❑ Remains stable in transit
- ❑ Provides the modular ability to even further enhance design properties to guard against severe pavement challenges
- ❑ Can modify SteelGuard on-site to even further improve toughness, wear ability, tenacity, chemical resistance or friction numbers.

How can SteelGuard be modified?

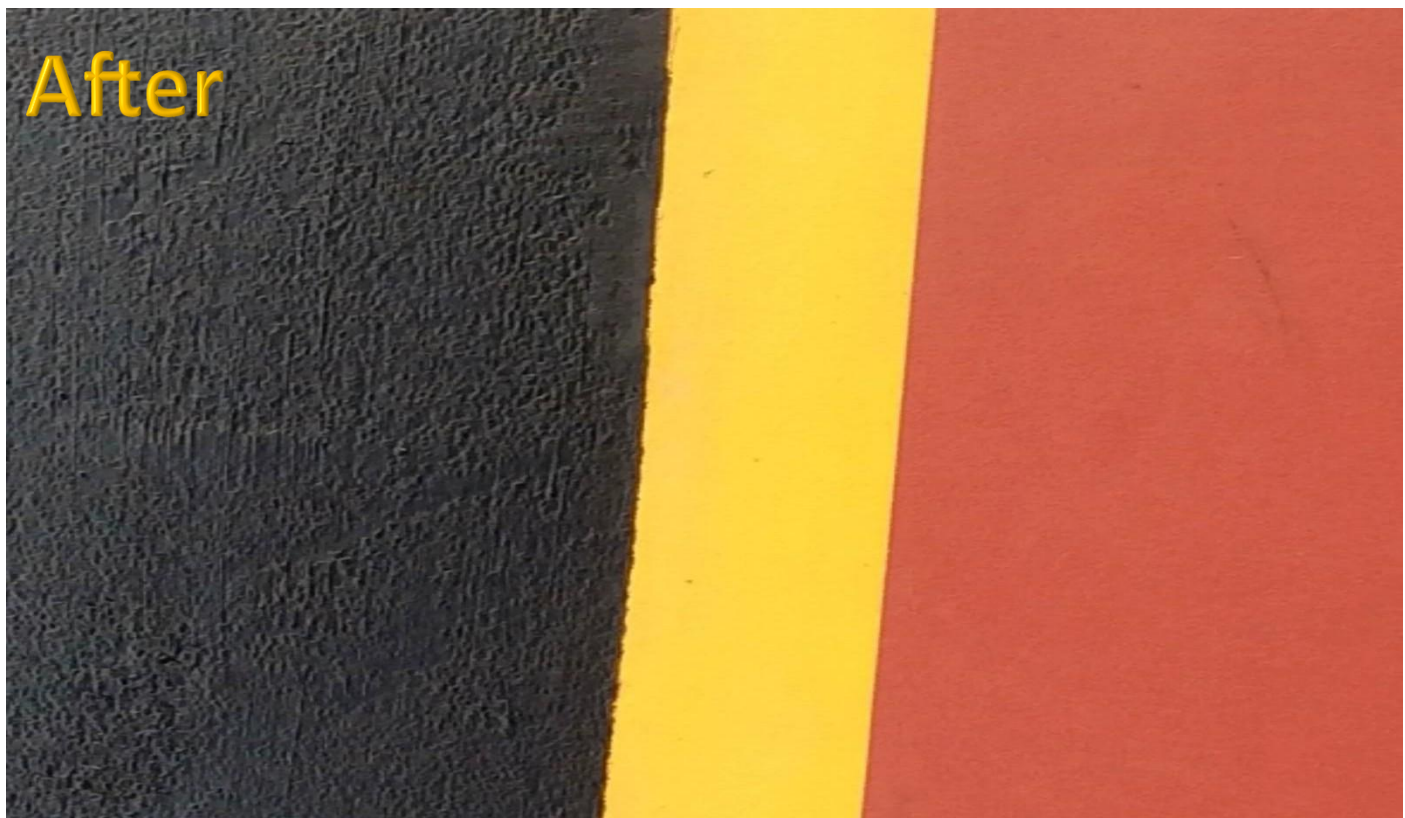
- By adding any of the following materials you can modify SteelGuard any way you wish to suit the specific pavement surface, the condition of traffic and the location of the project.
 - ▣ RaynGrit
 - ▣ Latex













SSBM CCC1000S

Water Based Concrete/Stone Sealer & Water Repellent

PRODUCT DESCRIPTION

SSBM CCC1000S is a water repellent product based on silicone resin solution ready to use to provide water repellent surface with improved self-cleaning properties on exterior building, brick work, concrete, cement rendering and natural stone, it will repel rain water and inhibits ingress of surface water with no hydrostatic pressure.

FIELDS OF APPLICATION

SSBM CCC1000S can be used above and below grade to protect against moisture penetration by capillary action. It penetrates deep into the surface pores creating a water resistant barrier which remains effective against moisture for many years.

Substrates including concrete, brick work, cement rendering and natural stone.

ADVANTAGES

- Effective on old and new surfaces, reduces unsightly staining.
- Can be applied by brush or roller, risk of efflorescence is reduced.
- Reduce causes of cracking and precast concrete.
- Preserves natural color and texture of created material and allow surface to breathe.

PROPERTIES

Standards	BS 6744-92 Class A & B
Product Appearance	Colourless Liquid
Composition	Formulated based on Silicone Resin water based and other additives.
Specific Gravity @ 25°C	0.80 – 0.90
pH Value	5-7
Compatibility	SSBM CCC1000S is compatible with brick work, concrete, cement rendering, stone.

Note: These results were obtained at laboratory conditions (23°C)

PACKAGING

Product	Packaging
SSBM CCC1000S	1 Liter
SSBM CCC1000S	5 Liters
SSBM CCC1000S	20 Liters

Supplied in Plastic Container or Jerry Can

APPLICATION DATA

Surface Preparation: Surface must be clean, dry, free from oil & grease, loose particles and algae growth. Structurally sound and free of efflorescence, mortar residue and other contaminants that would prevent the penetration of SSBM CCC1000S. Cracks, voids and other surface defects must be repaired prior to application.

SSBM CCC1000S can be applied by spraying or brushing. Ensure an even coat over the entire surface, porous surface should be well saturated with a two coats application.

COVERAGE

Coverage: 4.5-9.0 M² per one liter based on number of coats.

The coverage rates are approximate and for estimation purpose only.

STORAGE

Storage: Up to one year stored out of direct sunlight and extremes of temperature. The product shall be raised on pallets, and not stored directly on the ground surface.

Stir the Plastic Container or Jerry can before using.

CLEANING

Use water to clean application equipment and tools, immediately following use.

APPLICATION PICTURES



CCC1000S CONCRETE PROTECTION







Banca della Calce provides materials and services for professionals in sustainable building and architectural restoration, including certified aged lime putty, natural hydraulic lime, and innovative products made from lime and hemp. They also offer expert knowledge on formulation and on-site consultancy for optimal use of these materials.

La Banca della Calce produces the highest quality lime-based products. The company positions itself as a leader in developing and sharing knowledge of lime technologies — a material with ancient origins and a promising, sustainable future.

Keeping in mind the excellent results and high customer satisfaction, Banca della Calce aims to expand the use of **eco-friendly materials to improve livability**.

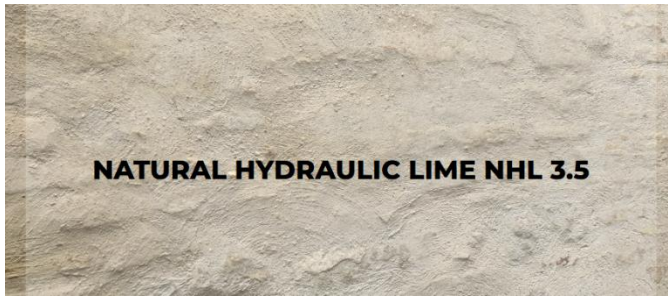


TRADITIONS AND FUTURE BLEND IN HIGHER-QUALITY LIME

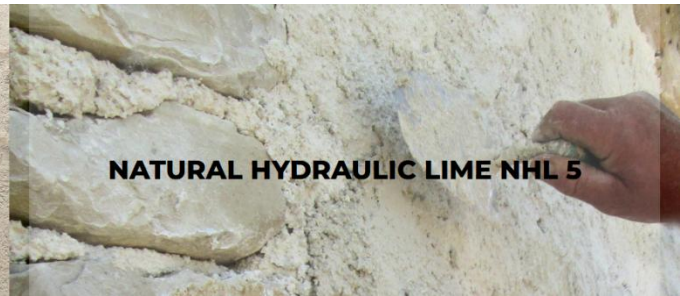
Over the years, people have been building with lime, creating beautiful buildings and structures. Today this noble material become again present: to preserve the past and build the future we need lime.

But is all lime the same? What type of lime should one use? Lime is not all the same. **La Banca della Calce** provides qualified high quality lime ensuring a more sustainable construction.





NATURAL HYDRAULIC LIME NHL 3.5



NATURAL HYDRAULIC LIME NHL 5

NATURAL HYDRAULIC LIME

The hydraulic limes are obtained from marly limestones or calcareous marls (natural mixtures of limestone and clays) subjected to burning process at temperatures generally between 1100 and 1250° C. In such conditions calcium oxide is formed, which subsequently combines in part with the silica and the alumina of the clay, forming hydraulic silicates and calcium aluminates, that is compounds which, reacting chemically with water, form stable and insoluble hydrates. That allow the material to harden and remain stable even under water (hydraulic behaviour). On leaving the kiln, the hydraulic lime is subjected to extinction, such as aerial lime, but, given the presence of hydraulic compounds, the extinguishing water is only the stoichiometrically necessary to transform the calcium oxide, left as quicklime, in calcium hydroxide. If, in fact, even the silicates and the aluminates are hydrated, they would not be able to provide hydraulic characteristics during use.

According to the EN 459-1:2010 standard, natural hydraulic lime is available in three different types: NHL 2, NHL 3.5 and NHL 5. The acronym NHL is, in fact, synonymous with Natural Hydraulic Lime. The numbers 2, 3.5 and 5 represent the compressive strength expressed in N/mm² and are associated with the traditional terms of 'weakly hydraulic lime', 'moderately hydraulic lime' and 'eminently hydraulic lime'. The merit of the NHL is that each grade is suitable for different types of use and boundary conditions. This means that it is possible to obtain different mortars, adapting them to the type of use, the required performances and the expected durability. Banca della Calce has selected two types of NHL 3.5 and NHL 5 hydraulic lime produced in Italy in traditional, natural draft, coal-fired kilns.

WHAT LIME? WHAT INTERVENTION?

Contrary to what is thought, when choosing a natural hydraulic lime, not always a "stronger" lime is the best solution. The most important thing it's know what to do and choose the right lime.

In the case of historical walls, by way of example, the mechanical resistances are less important than the chemical-physical compatibility. A NHL 3.5 natural hydraulic lime used in a plaster will give the coating characteristics of breathability and help regulate the relative humidity in indoor environments. Moreover, thanks to the low elastic modulus, it will have the ability to absorb the natural settling of the masonry and the effects of thermal expansion, thus ensuring greater durability over time.

In other cases, of course, mechanical performance will be important. A mortar with a low mechanical strength, will be poorly suited to collect stones and bricks or to make a screed. In these cases, NHL 5 will be the right choice and allows you to build, fix, cover, coat and repoint. Finally, it is necessary to consider the environmental conditions and the degree of exposure to atmospheric agents. The mortar must have a hydraulicity index suitable for the quantity of water, or humidity, with which it will normally be in contact over time. Basically, in the preparation of a mortar it is not enough to choose the stronger or weaker lime, instead it is necessary to select the most suitable one.

Banca della Calce can help you make this choice and support you in the selection and mix design phase of the mortars formulated for your restoration or new construction site, always oriented by conservative principles and green building choices.

APPLICATION PICTURES





UNISTRUT® A PART OF

Products:

Unistrut Channel & Metal Framing
 Unistrut Fixing
 Unistrut Kwikstrut
 Unistrut Cable Tray
 Unistrut Cable Ladder
 Unistrut Cable Basket
 Unistrut Pipes & Cable Clamps
 Unistrut Lighting Supports
 Unistrut Steel Trunking
 Complete range of supporting accessories in a wide variety of finishes includes PG, HG, SS, ZD designed to suit the environmental demands of the modern day market sector.





Fire Retardant Varnishes/Primer, Intumescent Paints,
Coatings for Asbestos Reclamation





Roadtechs is one of the leading manufacturers, suppliers, and installers of Specialist Surface Treatment Solutions in the UK. Established in 1994, Roadtechs has built a strong reputation in the industry.

Roadtechs combines innovation, quality, performance and experience with robust solutions and first-class engineering. We offer comprehensive repair and maintenance options for road, rail, docks, runways, urban environments, and bridges. As an open and flexible organization that offers a complete transport infrastructure solution from manufacture, delivery and installation through to expert advice, guidance and consultation enabling us to deliver a rapid and effective service to help keep transport networks safe, comfortable and operational.

Roadtechs delivers Specialist Surface Treatments using non-traditional materials and processes with the majority of operations carried out on term contracts for highways and infrastructure maintenance. Our collaborative approach focuses on identifying a more permanent solution, underpinned by our ability to offer the client a wide choice of products and the way we deliver them. We are consultative, realistic, and honest about what our Specialist Surface Treatments can and cannot do and where they will bring most benefit.

Surface Extension Treatments

Our Surface Extension Treatments (SET), Reclamite®, RHINOPHALT® and CRF Surface Sealant, offer penetrative, restorative and durable solutions to enable the lifecycle extension of existing 'good' roads.

[Read more](#)

Highways

Roadtechs is one of the leading manufacturers, suppliers, and installers of Specialist Surface Treatment Systems in the UK. We offer comprehensive repair and maintenance solutions for road, rail, docks, airports, bridges, and other built environments.

[Read more](#)

Aviation

Our products and services are suitable and proven to assist with repairing and maintaining Aviation Infrastructure with minimum disruption, to meet the exacting standards required.

[Read more](#)

Materials

From our modern automated manufacturing facility in Norfolk we supply and deliver a wide range of road markings, high friction surfacings, crack & joint repair systems and decorative surfacings for all types of highways and pedestrian surfaces.

[Read more](#)

Plant & Equipment

With extensive experience of operating in the highway maintenance sector ourselves, we understand the requirements of the vehicles and tools needed to deliver efficient and cost-effective highway maintenance and safety solutions.

[Read more](#)

Why Roadtechs?

We bring together innovation, quality, performance and experience with robust solutions and first-class engineering to offer comprehensive repair and maintenance options for road, rail, docks, runways, urban environments, and bridges.

[Read more](#)

JOINT, CRACK AND PATCH REPAIRS:

- Roadflex F (Flexible) and H (High Modulus)
- Techscreed Fill and Overband
- Roadseal Overbanding
- Techcrete (Various Grades) – Highways England Approved
- Techjoint Pj300 – Asphaltic Bridge Joint.
- Techjoint Torpical

POTHOLE REPAIRS:

- Roadpatch MMA
- Roadpatch

HIGH FRICTION / COLOURED SURFACING:

- Techgrip RTT1
- Duragrip
- Duragrip PU
- Techgrip Colours



Joint, Crack and Patch Repairs

Effective solutions to treat all types of joint, crack and pothole issues, including BBA certified and HAPAS approved products.



Pothole Repairs

A unique range of pothole solutions which can be used to repair all types of potholes quickly, efficiently, and permanently.



High Friction / Coloured Surfacing

BBA certified and HAPAS approved Type 1, hot and cold applied high friction surfacing systems and other area marking solutions.



Road Marking Materials

A full range of BSI Kitemark licenced thermoplastic road marking materials along with innovative MMA and Chloroprene based road marking solutions.



Specialist Surfacing

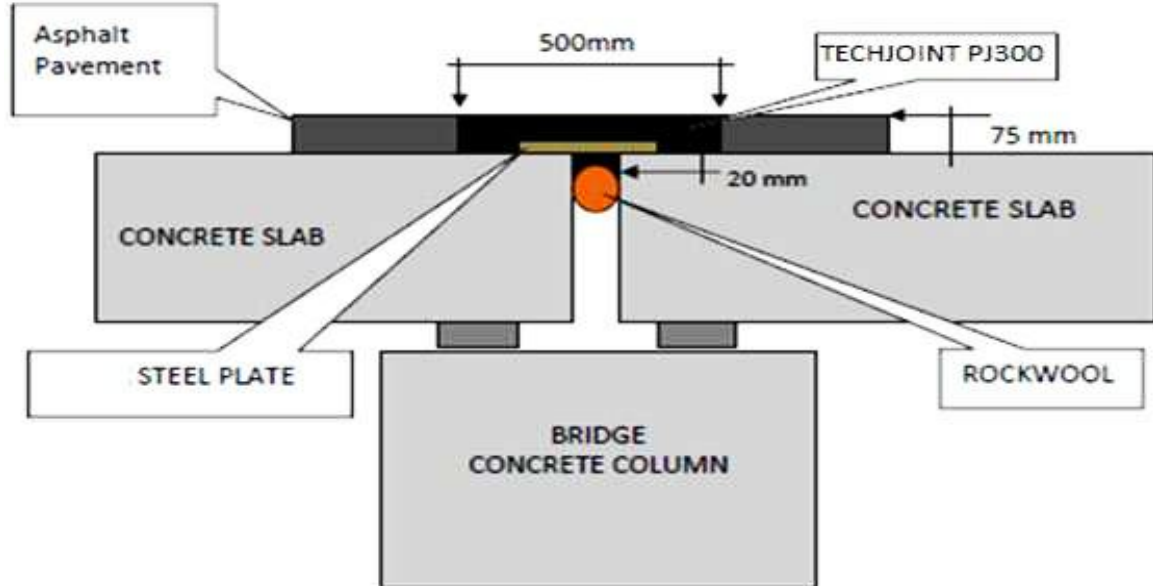
Unique surfacing products including textured overlay, ironwork reinstatement and resin bound systems.



MMA Products

Innovative Methyl Methacrylate (MMA) based products for a wide range of applications, including roadmarking, area marking and crack repairs.

TECHJOINT PJ300 ASPHALTIC PLUG JOINT SYSTEM



Tensar®

Tensar, a division of CMC, provides innovative, project-specific solutions for a wide range of site development applications. As a global leader in ground stabilization and soil reinforcement, our proven geogrid technology has supported thousands of civil construction and engineering projects around the world for nearly 50 years.

When compared to conventional site development solutions, **Tensar's** technology-based alternatives are faster to install, incorporate higher performance, remain reliable over time, and are more cost-effective. Together, these benefits create a greater total value through upfront and lifecycle cost savings, time savings and increased sustainability.

In 2022 **Tensar** became a division of CMC, which is headquartered in Irving, Texas, USA expanding our global presence significantly. **Tensar** also works alongside Geopier, a division of CMC to provide a wider range of solutions to customers.

To ensure easy availability of our high-performance solutions, **Tensar** has three manufacturing locations around the world:

Morrow, Georgia, United States, Blackburn, England, United Kingdom, Wuhan, China

These plants now join the CMC network of sites which includes everything from local recycling centers, steel mini-mills, and micro-mills to large-scale fabrication centers, engineering operations, heat-treating facilities, and other construction-related operations.

For more information on other CMC divisions and lines of business, visit cmc.com



Tensar geogrids are highly efficient, durable polymer grid products suitable for the stabilization or reinforcement of soil aggregates. They are also lightweight and easily handled. This product class is highly suitable for use as structural load-bearing elements in many demanding earthwork construction applications, like the stabilization of roadways, rail tracks, and other paved and unpaved areas subject to traffic loading.



ASPHALT REINFORCEMENT (PAVED ROADS AND PAVED AREAS)



RETAINING WALLS



STEEP SLOPES



Erosion Control- Protecting slopes and waterways with Tensar Technology



TensarTech Geocell Mattress System provides an alternative approach for embankment construction.



Tensar geogrids can strengthen weak subgrades and can control differential settlement, creating a mechanically stabilised layer for runways and taxiways.



Tensar TriAx® geogrids Increase bearing capacity and improve safety & create safe areas of hard standing.



Tensar geogrids can strengthen weak subgrades and can control differential settlement, creating a mechanically stabilised layer for runways and taxiways.

Geogrids that mechanically stabilise the track ballast layer to reduce deformation.



Time-saving technology for home builders

REX MAR

Rexmar Engineering Ltd

Rexmar Engineering Ltd manufacturers and suppliers of Road Marking Machines and Equipment.

They take pride in delivering high standard of craftsmanship, supported by a competitive price structure and a policy of working with customers to meet their own individual requirements.

Rexmar Engineering is committed to developing 'state of the art' equipment , prioritizing reliability and fuel efficiency while maintaining a strong focus on environmental sustainability.

Our range of equipment extends from Truck Mounted and Self-Propelled Thermoplastic Application Machines through to Feeder Trucks, Screed Trucks and Anti-Skid Trucks (vehicles used for the application of surface friction materials).

Screed Trucks

Feeder Trucks

Road Marking Machines

Anti Skid Truck

Road Marking Trailer

Pre-Heaters





10 Tonne Screed Truck

Complete with Twin 2 x 40 Gallon Diesel Oil Fired Pre-Heaters



12 Tonne Screed Truck

Complete with Twin 2 x 60 Gallon Diesel Oil Fired Pre-Heaters and a Surface Mounted Compressor



14 Tonne 5000 Extrusion Machine

Complete with a Thermoplastic Holding Tank and a Compressor



14 Tonne 5000 Spray and Extrusion Machine

Complete with a Thermoplastic Holding Tank and a Compressor



TG3500 Road Marking Trailer - Complete with Twin 2 x 40 Gallon Gas Fired Pre-Heaters.



Twin 2 x 100 Gallon Gas Fired Pre-Heaters



Single 1 x 40 Gallon Gas Fired Pre-Heater



Triple 3 x 30 Gallon Diesel Oil Fired Pre-Heaters - Shown as Truck Mounted



RM1100 Self Propelled Thermoplastic Spray/Extrusion Road Marking Machine



Pedestrian Operated Thermoplastic Screed Line Laying Machine



TG3500 Road Marking Trailer - Complete with Twin 2 x 40 Gallon Gas Fired Pre-Heaters.



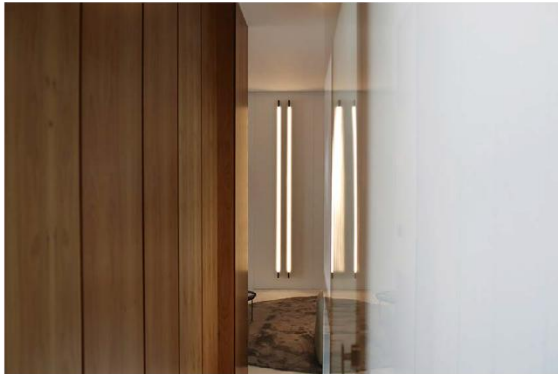
TG3500 Road Marking Trailer - Complete with Twin 2 x 40 Gallon Gas Fired Pre-Heaters.



OMNIA QUAE SUNT
 LUMINA SUNT

380-750

I III III I

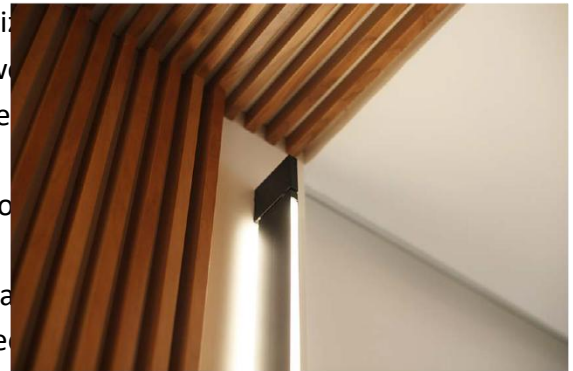


ITS OF

visible I
 . This is



customi
 here w
 e proce
 itects o
 paces a
 . We fe



2007 FORM 10/11/14/16/18/20/22/24/26/28/30/32/34/36/38/40/42/44/46/48/50/52/54/56/58/60/62/64/66/68/70/72/74/76/78/80/82/84/86/88/90/92/94/96/98/100

from there we develop our creative process.

ey element for us, and
 of the final result.

ilding

the re
 ipline,
 ubs, t
 gether

inary
 , obta
 quality



2007 FORM 10/11/14/16/18/20/22/24/26/28/30/32/34/36/38/40/42/44/46/48/50/52/54/56/58/60/62/64/66/68/70/72/74/76/78/80/82/84/86/88/90/92/94/96/98/100

EVERYTHING IS LIGHT

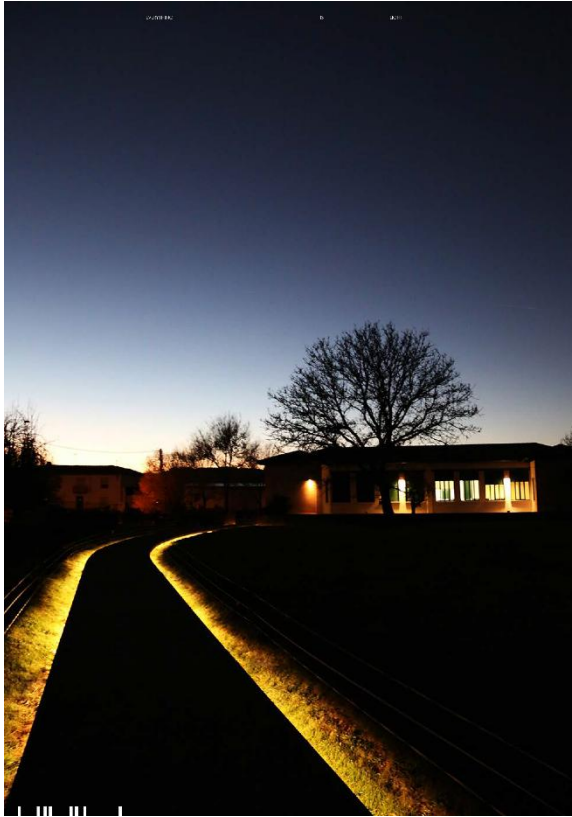


Photo: Jeroen
 Hout

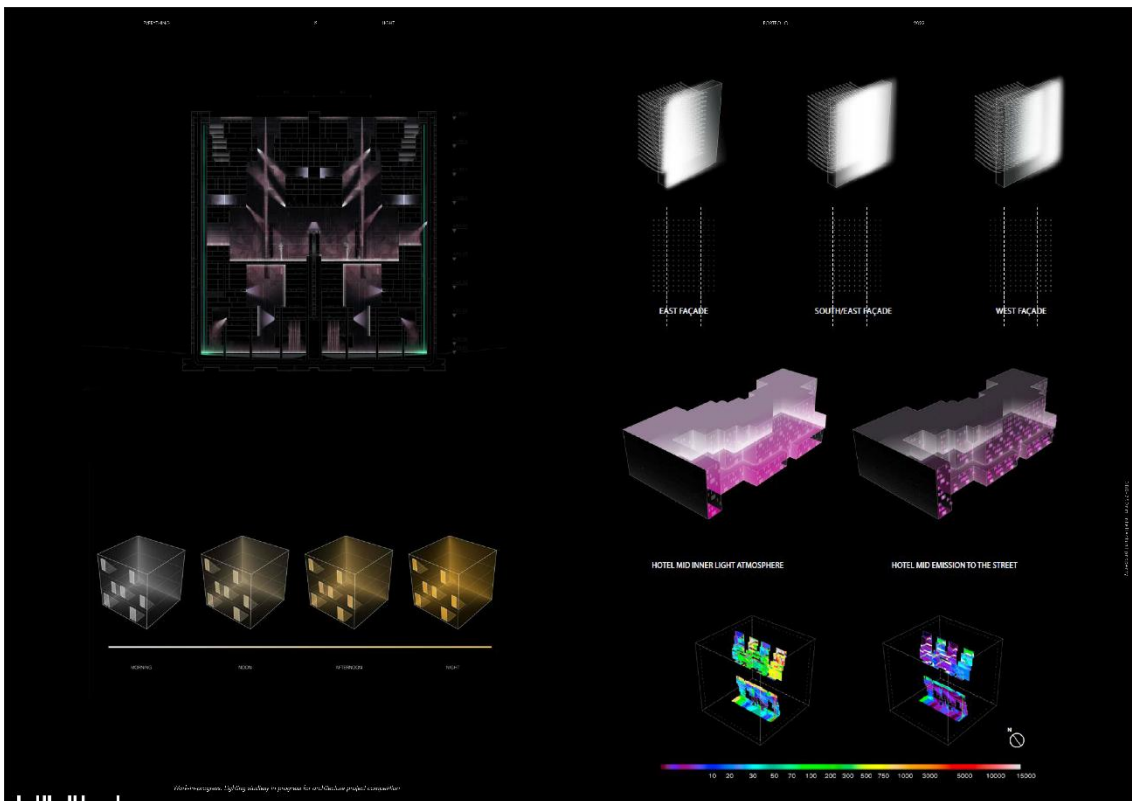


I III III I





Concepts Visualization
 Concepts des Conforts, la vie, l'espace
 Design: Studio Architecture





Fire Retardant Varnishes/Primer, Intumescent Paints, Coatings for Asbestos Reclamation



STARKEM® SRL,

founded in 1999, is a chemical company specializing in the production of fire-retardant impregnating agents and fire-retardant varnishes, intumescent paints, products for the reclamation of asbestos cement roofing and adhesives for industrial applications.

1) FIRE RETARDANT VARNISHES - PRIMER

Products certified in fire reaction class 1 in accordance with the UNI 9796 and products certified in euroclass B-s2, d0 in accordance with EN 13501-1: 2009. Are used to treat secondary elements such as wood and parquet floors, wooden furniture, wooden or MDF panels and panels for exhibition stands.

2) INTUMESCENT PAINTS

Paints tested and certified, according to the Italian and European regulation, to ensure the fire resistance of painted artifacts.

They are used for the treatment of steel, wooden and reinforced cement structures such as beams, pillars, pre-fabricated, ceilings and brick walls.

3) COATINGS FOR ASBESTOS RECLAMATION

Specific coatings certified for the encapsulation, the confinement and the removal of asbestos artifacts. **STARKEM® Srl** is a company with a quality management system certified UNI EN ISO 9001/2008.





fireblock[®] 2010

Water based intumescent paint.



fireblock[®] 2018

Water based intumescent paint.



fireblock[®] 2024

Water based intumescent paint.



fireblock[®] 2010/c

Water based intumescent paint.



fireblock[®] 2024/c

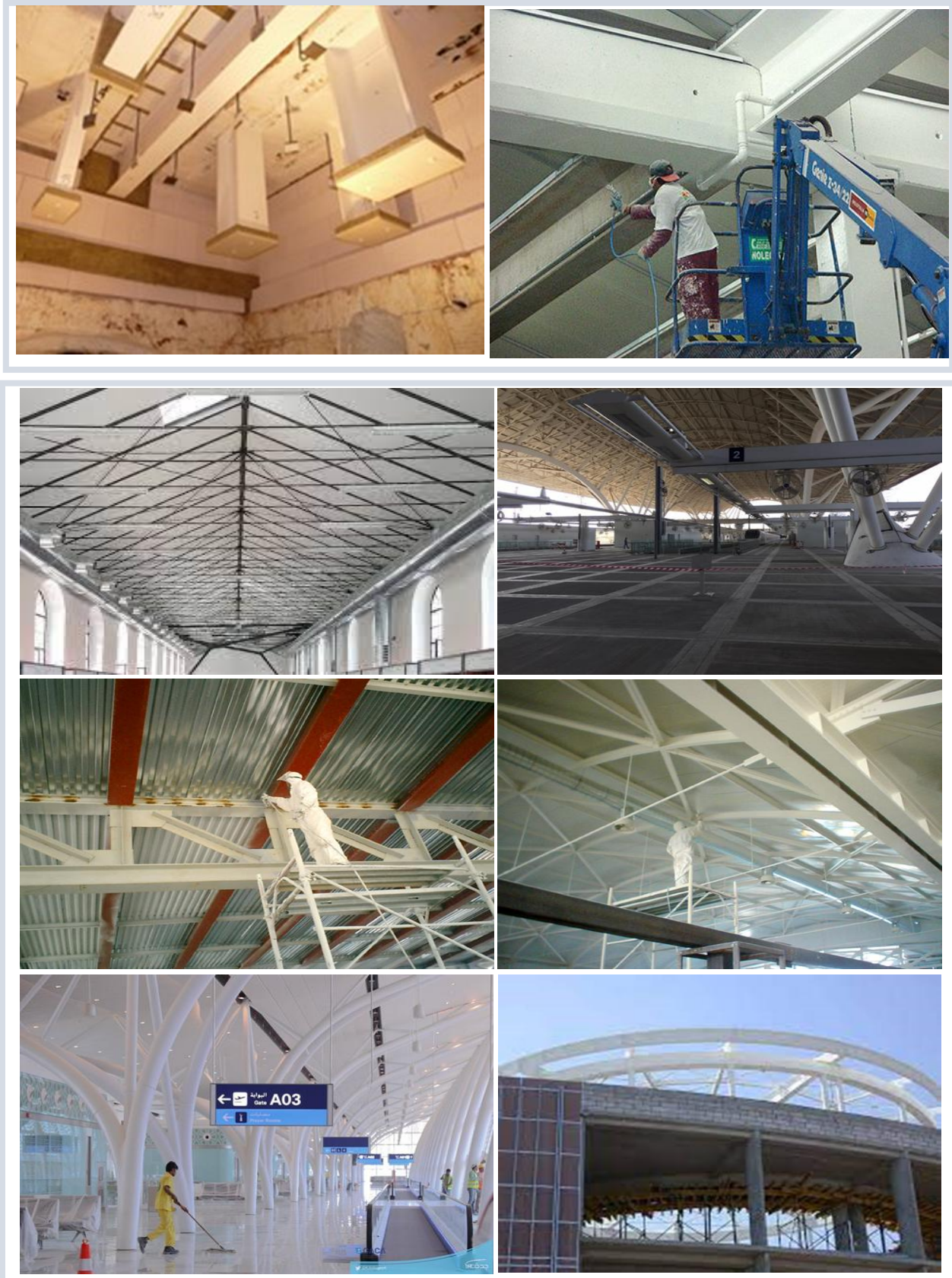
Water based intumescent paint.



ciclo fireblock[®] EU

Intumescent painting cycle.

APPLICATION PICTURES



TCE

SUSTAINABLE ENGINEERED SOLUTIONS.

TCE

**SUSTAINABLE
ENGINEERED
SOLUTIONS.**

| CAPABILITY STATEMENT

TCE is a leading provider of deconstruction, environmental engineering civil, infrastructure and contracting services. Our team of dedicated professionals allows us to offer the best and most value for money sustainable engineered solutions to our clients.

TCE has in-house technical ability, resources and know-how to provide complete planning, and delivery solutions through all stages of a project life-cycle.

OUR CAPABILITIES

| REMEDIATION

TCE is a market leading environmental engineering specialist, with a proven industry track record of successfully delivering complex sensitive contaminated land remediation projects nationally.

“TCE bring a unique and fresh approach to problem solving and environmentally sustainable engineered project execution.”

FAHMI REZA
REMEDATION OPERATIONS MANAGER

TCE is at the cutting edge of market practices for early works packages to remediate and rehabilitate brownfield sites ready for its new potential use.

TCE employ the latest remediation technologies and have the experience, knowledge and capability to deliver optimal approach solutions and desired outcomes for specific site challenges.

TCE are committed to waste reduction, sustainability and making our communities and environments safer and cleaner for the future. TCE demonstrates this steadfast commitment by detailed material handling, waste segregation and treatment, maximisation of on-site and offsite material re-use and recycling and minimisation of waste material leaving site to landfill.

At TCE, our dedicated inhouse water team excels in the execution of contaminated groundwater projects, technical advisory services, and the design, commission and operation of temporary groundwater treatment solutions including "pump and treat" type system.

Our expertise spans the full spectrum of services, including:

Design & Supply:

Tailored groundwater treatment solutions for contaminated water treatment to meet site specific stringent discharge criteria.

Rentals:

Providing flexible options for temporary solutions.

Mobile Water Treatment Plant:

Modular solutions for groundwater treatment including PFAS treatment.



TCE offers a full range of civil infrastructure services. At TCE we pride ourselves on having in-house professionals and industry knowledge to successfully deliver all manner of civil and infrastructure projects.

TCE have worked with our partners in Government, Services Authorities, Transport for NSW, Rail, Oil and Gas, Air and Seaports, National and International

Market Industry Leaders to successfully deliver major airport pavements, marine and coastal constructions, rail works, carparks, road upgrades, water and sewer networks, services reticulations and relocations, basement construction, reinforced concrete structures, steel structures, heavy industrial pavements, petroleum infrastructure, and highly trafficked roadways.



“In addition to providing comprehensive solutions and successfully delivering projects, here at TCE we pride ourselves on professionalism and open communication with our clients.”

WILL STAFFORD,
CIVIL AND INFRASTRUCTURE OPERATIONS MANAGER



Co-mender Inc. Canada is an online platform and app solution that using the AR technology (augmented reality), it allows contractors and structures owners to get professional solutions to their concrete structures problems by linking its international experts to its local partner contracting team providing full professional Investigate – Design – Build services.

Co-mender also provides the needed inspection expertise along with the needed NDT testing equipment's locally in any operating country at very reasonable man hours rates and only on demand reducing the cost of operating a full team with their full equipment.

All these activities are completed using a simple and user-friendly module Co-mendAIR developed and integrated in the platform by engineers to engineers based on extensive experience and full understanding of requirements and processes.

Products:

- ✓ **Condition Assessment**
- ✓ **Non-Destructive Testing**
- ✓ **Durability Analysis**
- ✓ **Concrete Repair**
- ✓ **Structural Analysis/ Strengthening**
- ✓ **Blast Resistance**
- ✓ **Cathodic Protection**
- ✓ **Strructural Watyerproofing**



Fig 01: Co-mendAir AR Technology



Fig 02 : Co-mendAir 360 Technology

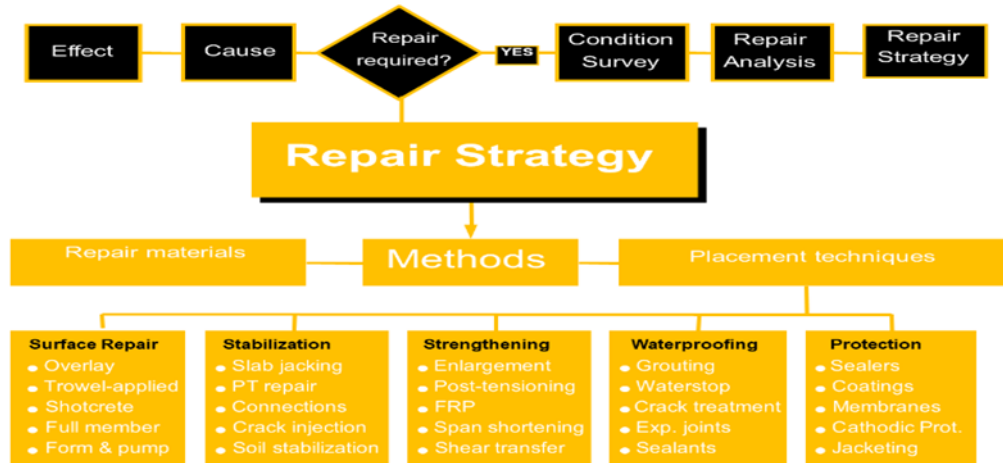
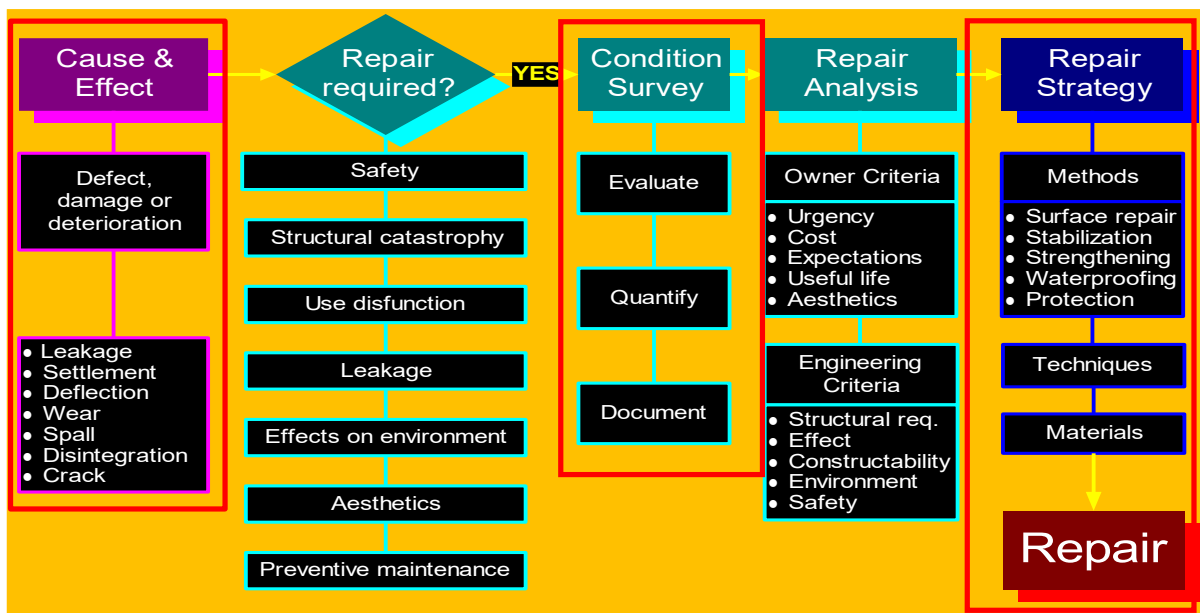


Fig 03: Our Condition assessment and Repair Process



Fig 04: Our Co-mendAir 360 Technology – Digital Twin



Fig 05 : Co-mendAir UAV 300 Drone

Our remote inspection with ComendAIR AR and MTK drones is of great value to inspect and detect automatically the defects and our sensing-based analysis is an important technique to test in very short time the whole bridge and provide real health data that matches the actual condition.

DOLENCO

Tunnel Systems

Advantages:

Once Installed, the Doleno Tunnel Drain System **does not have a limited lifespan**

Suitable for both new and existing structures

Can be used without or combined with spray membrane

The slim and monolithic design can be installed with very little space available

Quick and safe repair of concrete after physical amage, requiring minimal downtime of tunnel







Highway Resource Solutions (HRS) Ltd. Is based in United Kingdom pioneered the development of incursion warning systems, which are now recognized as industry best practice. The objective is to provide an instant warning to roadworkers when all other control measures fail. A secondary objective is to remove personnel from areas of potential confrontation which reduces risk, cost and carbon emissions. HRS Ltd. Incursion Prevention & Warning system comprises of four key elements which are complementary and designed to suit most traffic management scenarios.

IIPAWS is a highly sophisticated, digitally-enabled device that sits on top of road cones, creating a digital layer of protection around a work zone to keep it safe. It is ready at all times to warn the work force of an incursion and can also sound an alarm.

IIPAWS can be placed anywhere around, in or near a work zone, including at access points, closure points and checkpoints.

Key benefits:

- Increase employee safety**
- Prevention of work zone incursions**
- Improved customer and road user safety**
- Employees protected from confrontation**
- Improved operational efficiency**





